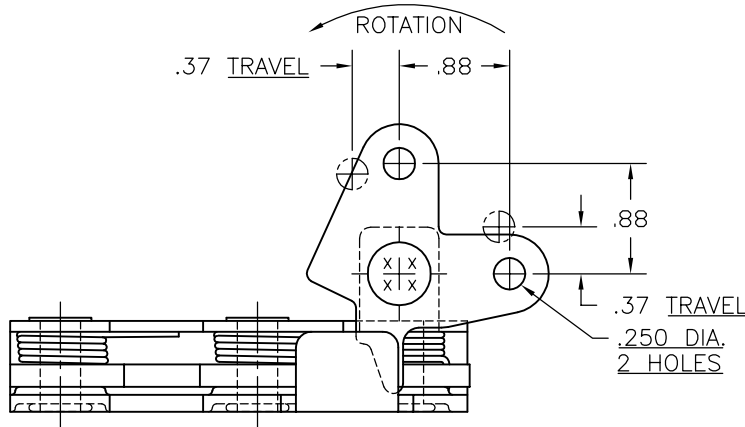


**CONFIDENTIAL NOTICE:** This drawing and the designs, specifications and engineering information disclosed hereon are the property of Eberhard Manufacturing Company and are not to be disseminated or reproduced without express written consent. The drawing is loaned in confidence and then only for consideration of the matter disclosed hereon. In accepting loan of this drawing, recipient agrees to keep it and the matter disclosed hereon in confidence and not to use nor permit their use in any way detrimental to Eberhard Manufacturing Company, Division of the Eastern Company. 21944 Drake Road, Cleveland, Ohio 44149-9712 © 2003 EBERHARD MFG. CO.

NO	CHANGE	ENG.NO.	DATE
	REVISED AND REDRAWN	EN 5375	10-24-08

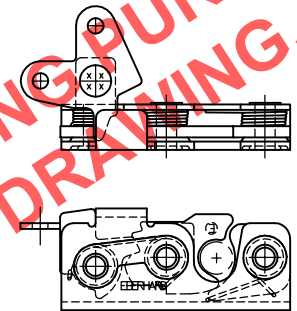
**⚠ APPROVED ⚠**

THIS LOCK ASSEMBLY MEETS ALL FMVSS 206  
SAFETY STANDARDS WHEN USED AND TESTED  
WITH AN EBERHARD CERTIFIED STRIKER

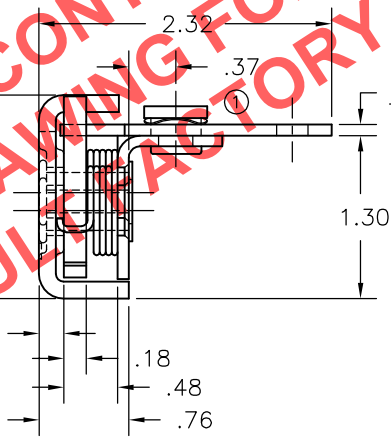
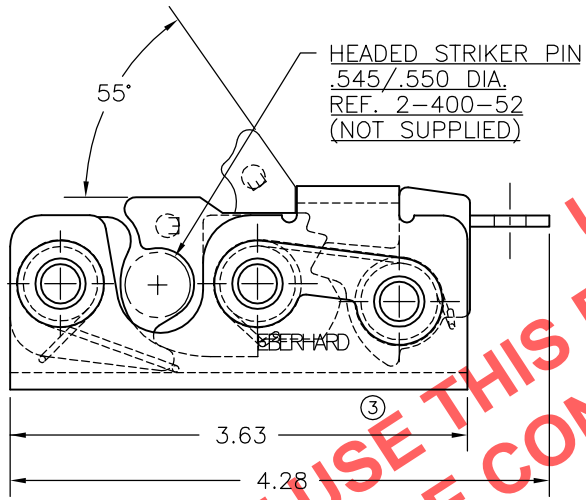


AVAILABLE FINISHES: ②③

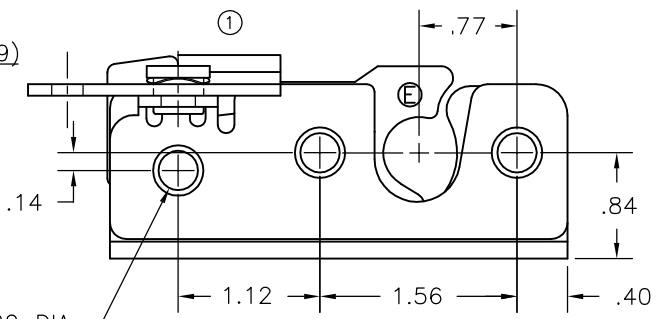
- (25) ELECTROPLATED ZINC
- (BG) BEARING GREASE WITH EVERLUBE INTERNAL COMPONENTS



LEFT HAND  
SCALE: HALF



#13 GA. (.089)  
REF. ④ ③



SHEET 1 OF 2  
RIGHT HAND SHOWN  
LEFT HAND OPPOSITE

- NOTE:**
1. USE .312 DIA. GRADE 8 BOLTS FOR INSTALLATION TO MEET FMVSS 206 SAFETY STANDARDS.
  2. RECOMMENDED TORQUE FOR TIGHTENING: 130+/-10 IN. LBS.

**EBERHARD MANUFACTURING CO.**  
DIVISION OF  
THE EASTERN COMPANY  
CLEVELAND, OHIO 44149-9712

UNLESS OTHERWISE SPECIFIED TOLERANCES AS FOLLOWS:  2 PLACE DEC. ± .03 3 PLACE DEC. ± .015 ANGLES ± 2°	DATE 4-29-91	NAME  <b>ROTARY LOCK</b>	
	DR. BY TGB		
	SCALE FULL	MATERIAL	PART NUMBER  1-400R/L
	CHK. BY	_____	

SUPERSEDES DRAWING 1-400 R/L DATED 4-29-91.