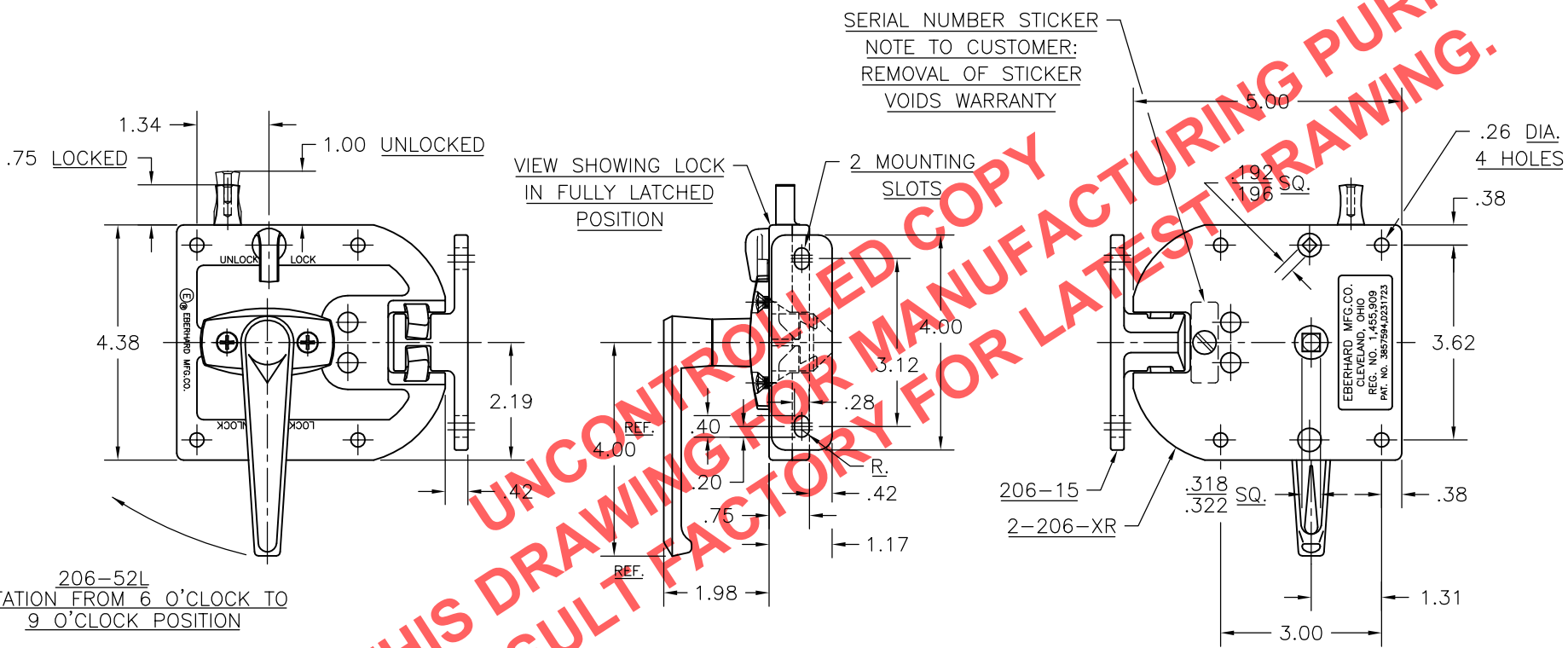


2-206-XU

**CONFIDENTIAL NOTICE:** This drawing and the designs, specifications and engineering information disclosed hereon are the property of Eberhard Manufacturing Company and are not to be disseminated or reproduced without express written consent. The drawing is loaned in confidence and then only for consideration of the matter disclosed hereon. In accepting loan of this drawing, recipient agrees to keep it and the matter disclosed hereon in confidence and not to use nor permit their use in any way detrimental to Eberhard Manufacturing Company, Division of the Eastern Company. 21944 Drake Road, Cleveland, Ohio 44149-9712 © 2002 EBERHARD MFG. CO.

NO	CHANGE	ENG.NO.	DATE
	REVISED AND REDRAWN	EN 5078	12-20-02

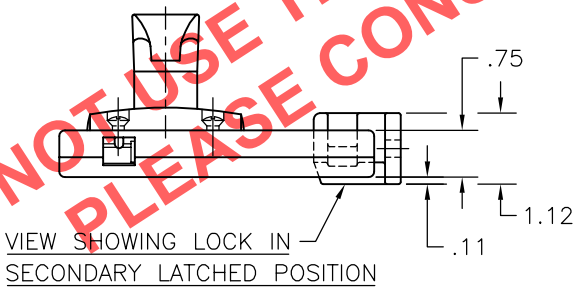
PART NO.	DESCRIPTION
2-206-XUR/L	ASSEMBLY WITH STRIKER P/N 206-15
2-206-XR/L	ASSEMBLY WITHOUT STRIKER P/N 206-15



206-52L  
ROTATION FROM 6 O'CLOCK TO 9 O'CLOCK POSITION

**NOTE:**  
THIS IS THE SAME AS THE 5-206-XUR/L EXCEPT FOR THE POSITION AND ROTATION OF THE HANDLE WHICH IS MOUNTED VERTICALLY.

CUSTOMER PRINT  
RIGHT HAND SHOWN  
LEFT HAND OPPOSITE



SUPERSEDES DRAWING 2-206-XUR/L CHART DATED 1-25-93.

UNLESS OTHERWISE SPECIFIED TOLERANCES ARE AS FOLLOWS:	DATE 12-18-02
ANGLES: ±2'	DR. BY FLP
2 PLACE DEC.: ±.03	SCALE HALF
3 PLACE DEC.: ±.015	CHK. BY
ALL HOLES: ±.005	

<b>EBERHARD MANUFACTURING CO.</b> DIVISION OF THE EASTERN COMPANY CLEVELAND, OHIO 44149-9712	
NAME <b>SLAM LOCK W/VERTICAL LOCKING BUTTON, INSIDE LOCKING KNOB, VERTICAL NON-LOCKING INSIDE HANDLE &amp; STRIKER</b>	
MATERIAL *	PART NUMBER <b>2-206-XUR/L</b>