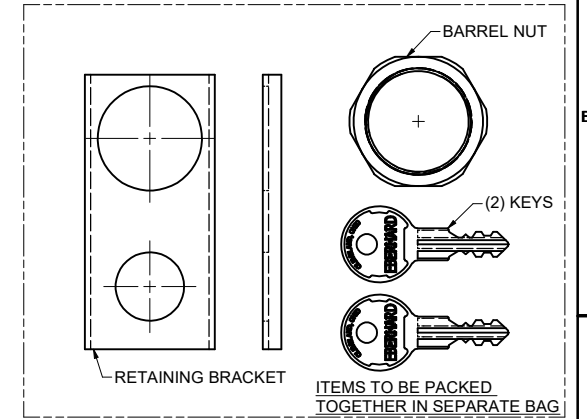
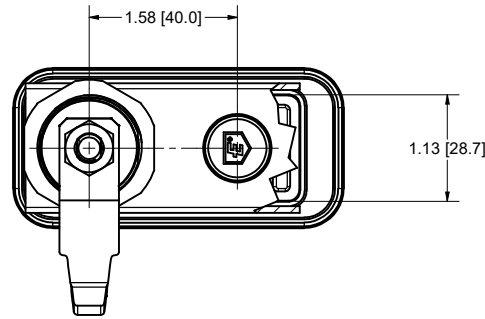
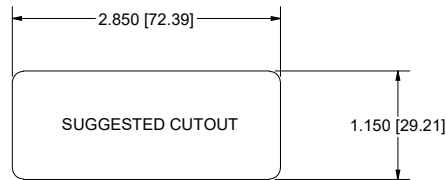
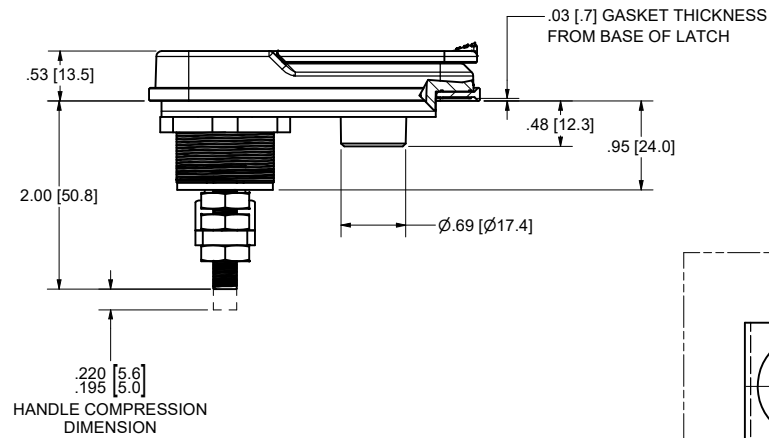
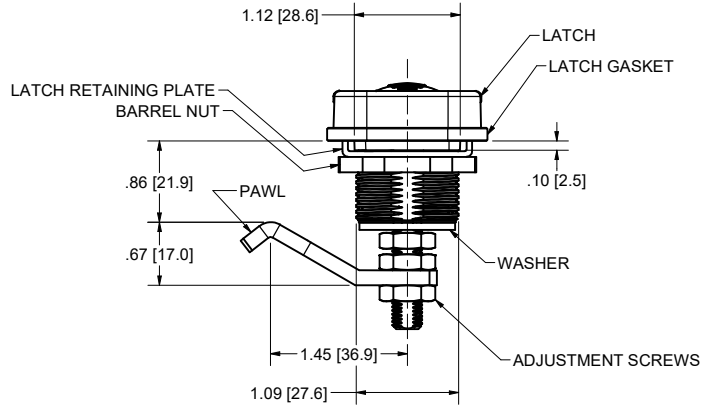
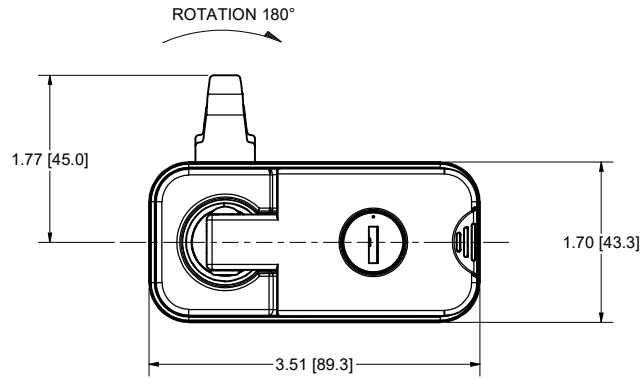
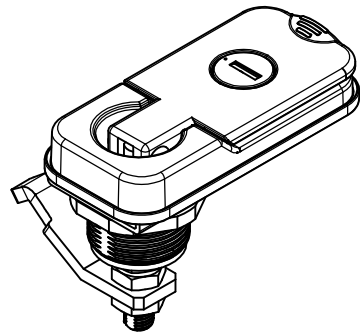


REVISION HISTORY						
REV	DESCRIPTION	EN	DATE	REV. BY	APVD. BY	
0	RELEASE TO PRODUCTION.	6140	3/8/2024	KAB	MR	
1	MODELS UPDATED TO CORRECT ORIENTATION FOR PAWL	6160	7/26/2024	KAB	MR	
2	ADDED BREAKOUT VIEW FOR GASKET, ADDED GASKET MATERIAL TO NOTES.	6161	8/2/2024	KAB	MR	
3	ADDED BRACKET AND NUT, KEYS TO SHIP UNINSTALLED IN SEPERATE BAG.	6167	9/13/2024	KAB	MR	



- NOTES:
 1, UNSPECIFIED TOLERANCE +/- .010
 2, MATERIAL AND PLATING MEET ROHS
 3, REFERENCE 3D MODEL FOR DETAILS.
 4, FINISH: (42) BLACK POWDER COAT (TEXTURED)
 5, TO ORDER, ORDER P# 1-1816-K-KEY#-42, AVAILABLE KEY NUMBERS J201-J210
 6, GASKET MATERIAL: EPDM

THIS DOCUMENT IS IN ACCORDANCE WITH ASME Y14.5-2009		NAME	
LINEAR MEASUREMENT (INCHES)	DATE	EBERHARD MANUFACTURING CO.	
UNLESS OTHERWISE SPECIFIED	7/26/2024	DIVISION OF	
TOLERANCES ARE AS FOLLOWS:	DWN. BY	THE EASTERN COMPANY	
		CLEVELAND, OHIO 44149-9712	
ANGLES:	± .2°	LIFT & TURN LATCH, KEY LOCKING, SQUARE BASE MOUNT.	
2 PLACE DEC.:	± .03	SCALE	1:1
3 PLACE DEC.:	± .015	MATERIAL	SEE NOTES
ALL HOLES:	± .005	CHK. BY	1-1816-K
		PART NUMBER	1-1816-K