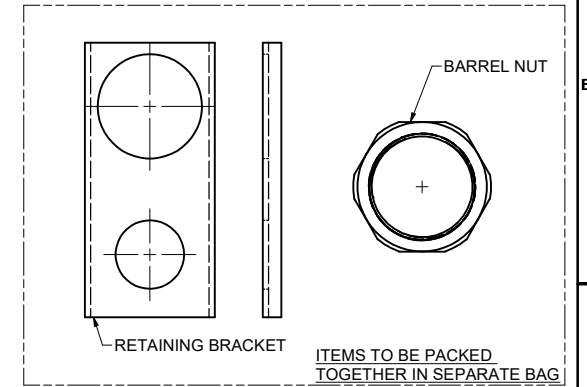
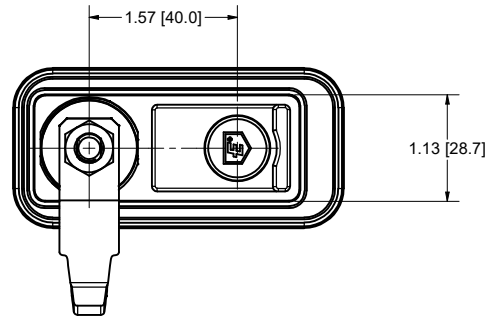
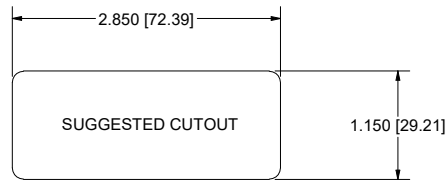
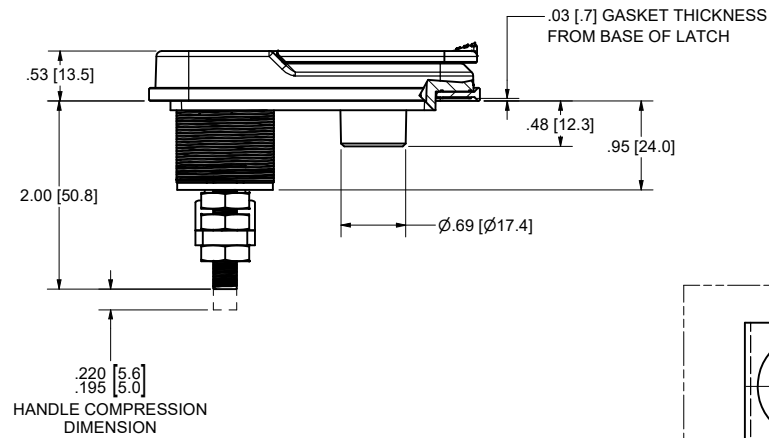
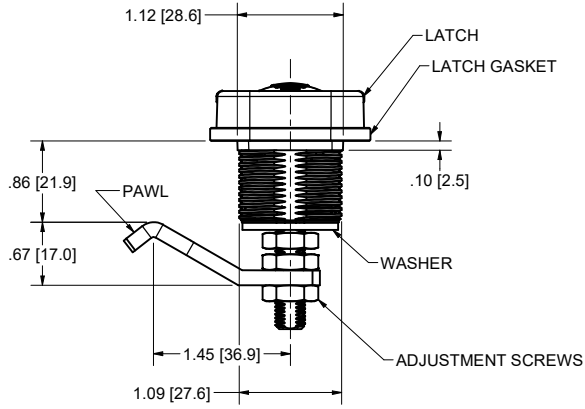
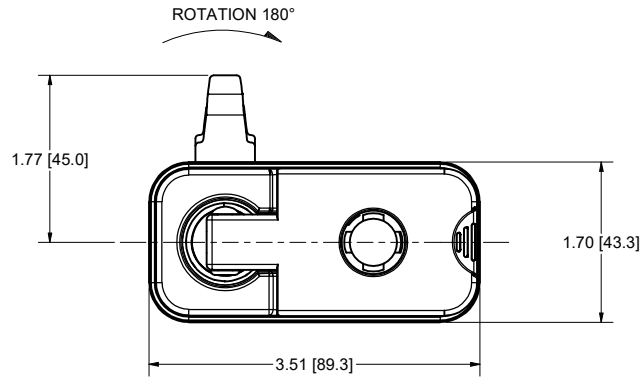
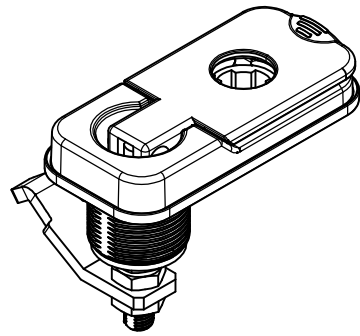


REVISION HISTORY					
REV	DESCRIPTION	EN	DATE	REV. BY	APVD. BY
0	RELEASE TO PRODUCTION.	6140	3/8/2024	KAB	MR
1	MODELS UPDATED TO CORRECT ORIENTATION FOR PAWL	6160	7/26/2024	KAB	MR
2	ADDED BREAKOUT VIEW FOR GASKET, ADDED GASKET MATERIAL TO NOTES.	6161	8/2/2024	KAB	MR
3	ADDED BRACKET AND NUT TO SHIP UNINSTALLED IN SEPERATE BAG.	6167	9/13	KAB	MR



- NOTES:
 1, UNSPECIFIED TOLERANCE +/- .010
 2, MATERIAL AND PLATING MEET ROHS
 3, REFERENCE 3D MODEL FOR DETAILS.
 4, FINISH: (42) BLACK POWDER COAT (TEXTURED)
 5, TO ORDER, ORDER P# 1-1816-K-KEY#-42, AVAILABLE KEY NUMBERS J201-J210
 6, GASKET MATERIAL: EPDM

THIS DOCUMENT IS IN ACCORDANCE WITH ASME Y14.5-2009		DATE: 7/26/2024		NAME: LIFT & TURN LATCH, KEY LOCKING, SQUARE BASE MOUNT, LESS KEY CYLINDER	
LINEAR MEASUREMENT (INCHES)		DWN. BY:		MATERIAL:	
UNLESS OTHERWISE SPECIFIED TOLERANCES ARE AS FOLLOWS:		SCALE: 1:1		CHK. BY:	
ANGLES:	± .2°	± .2°			
2 PLACE DEC.:	± .03	± .70			
3 PLACE DEC.:	± .015	± .38			
ALL HOLES:	± .005	± .15			

EBERHARD MANUFACTURING CO.
 DIVISION OF
 THE EASTERN COMPANY
 CLEVELAND, OHIO 44149-9712

SEE NOTES **1-1816-KLC**