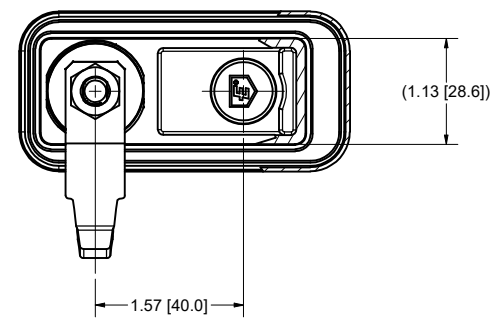
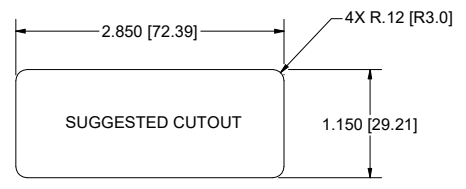
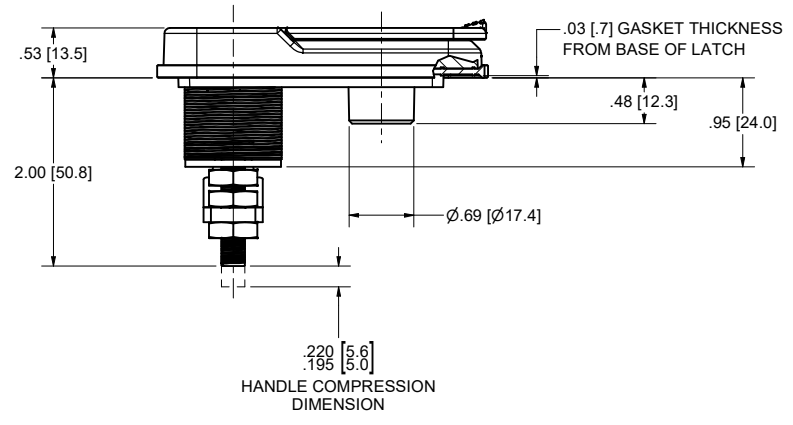
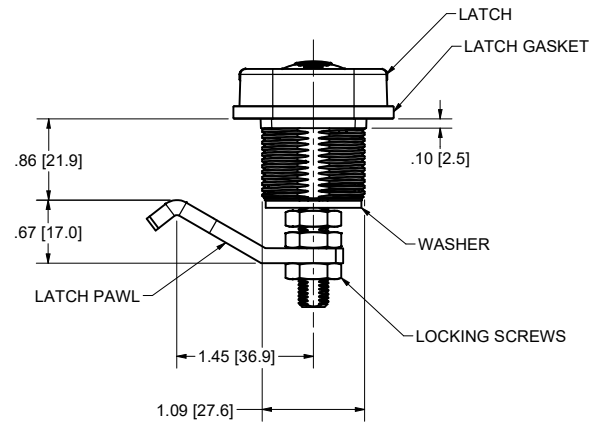
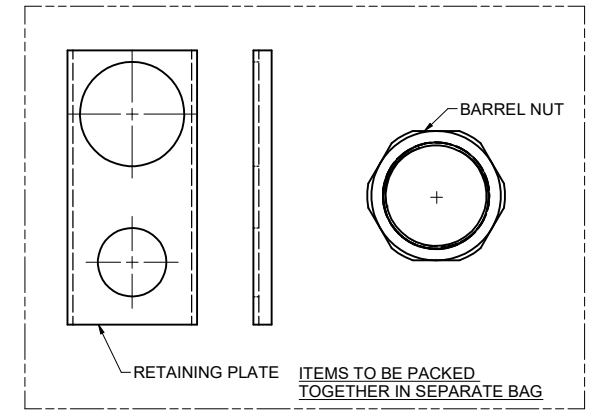
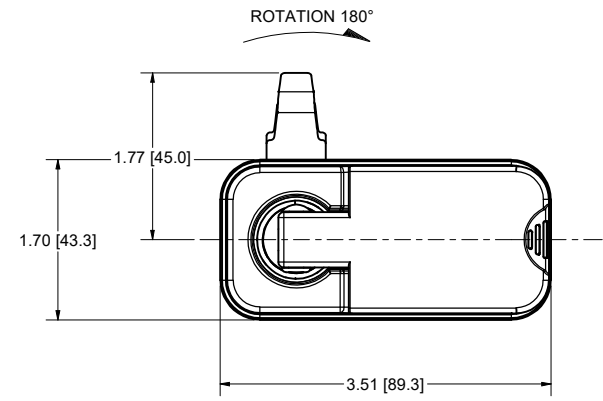
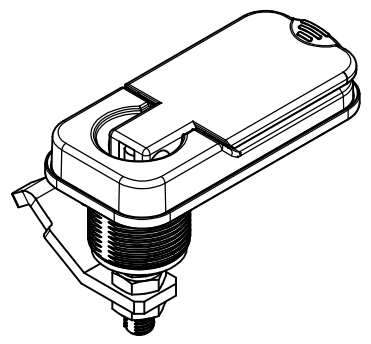


**CONFIDENTIAL NOTICE:** This drawing and the design, specifications, and engineering information hereon are the property of Eberhard Manufacturing Company and are not to be disseminated or reproduced without express written consent. This drawing is loaned in confidence and then only for the consideration of the matter disclosed hereon. In accepting loan of this drawing, recipient agrees to keep it and the matter disclosed hereon in confidence and not to use or permit their use in any way detrimental to Eberhard Manufacturing Company, Division of The Eastern Company, 21944 Drake Road, Cleveland, Ohio, 44149-9712 © 2024 EBERHARD MFG. CO.

REVISION HISTORY						
REV	DESCRIPTION	EN	DATE	REV. BY	APVD. BY	
0	RELEASE TO PRODUCTION PER NPD 50079	6140	3/8/2024	KAB	MR	
1	MODELS UPDATED TO CORRECT ORIENTATION FOR PAWL	6160	7/26/2024	KAB	MR	
2	ADDED BREAKOUT VIEW FOR GASKET, ADDED GASKET MATERIAL TO NOTES	6161	8/2/2024	KAB	MR	
3	ADDED BRACKET AND NUT, TO SHIP UNINSTALLED IN SEPERATE BAG	6167	9/13/2024	KAB	MR	



- NOTES:  
 1, UNSPECIFIED TOLERANCE +/- .010  
 2, MATERIAL AND PLATING MEET ROHS  
 3, REFERENCE 3D MODEL FOR DETAILS.  
 4, FINISH: (42) BLACK POWDER COAT (TEXTURED)  
 5, GASKET MATERIAL: EPDM

THIS DOCUMENT IS IN ACCORDANCE WITH ASME Y14.5-2009		NAME	
LINEAR MEASUREMENT (INCHES)		DATE	
UNLESS OTHERWISE SPECIFIED		7/26/2024	
TOLERANCES ARE AS FOLLOWS:		DWN. BY	
ANGLES:	± .2°	KBraun	
2 PLACE DEC.:	± .03	SCALE	
3 PLACE DEC.:	± .015	1:1	
ALL HOLES:	± .005	CHK. BY	
		MATERIAL	
		PART NUMBER	
		SEE NOTES	
		1-1816-NL	

**EBERHARD MANUFACTURING CO.**  
 DIVISION OF  
 THE EASTERN COMPANY  
 CLEVELAND, OHIO 44149-9712

**LIFT & TURN LATCH NON-LOCKING, RECTANGULAR MOUNT**