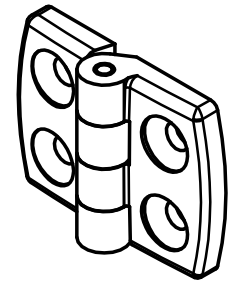
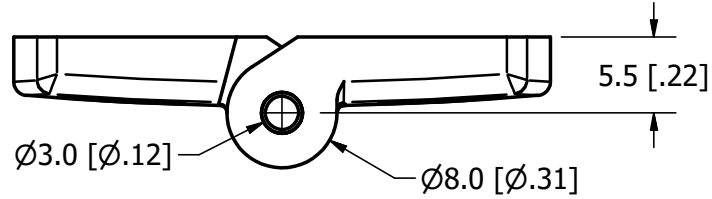


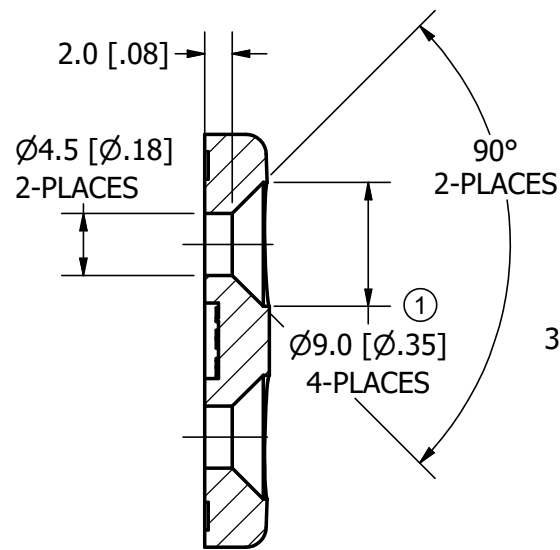
CONFIDENTIAL NOTICE: This drawing and the designs, specifications and engineering information disclosed hereon are the property of Eberhard Manufacturing Company and are not to be disseminated or reproduced without express written consent. The drawing is loaned in confidence and then only for consideration of the matter disclosed hereon. In accepting loan of this drawing, recipient agrees to keep it and the matter disclosed hereon in confidence and not to use nor permit their use in any way detrimental to Eberhard Manufacturing Company, Division of the Eastern Company, 21944 Drake Road, Cleveland, Ohio 44149-9712 © 2017 EBERHARD MFG. CO.

NOTE: ①

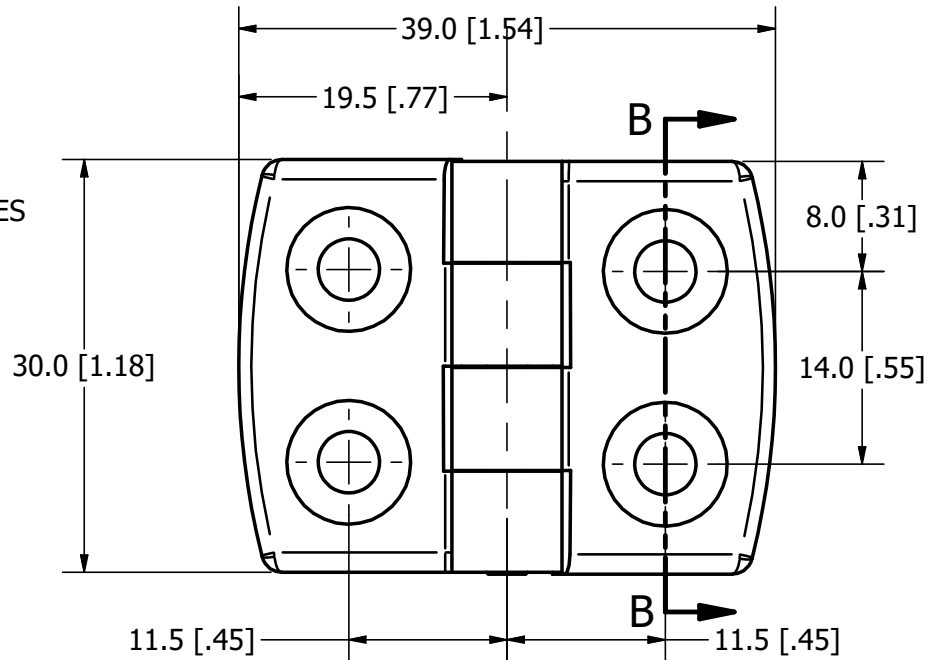
- 1) MATERIAL: PA 6 GF 30 NYLON, BLACK
MATERIAL PIN: STAINLESS STEEL
- 2) FINISH: (MB) MATTE BLACK,
TEXTURE MT1055
- 3) PART IS RoHS COMPLIANT



ISO VIEW
SCALE 1



SECTION B-B
SCALE 2
C'SINK HOLE TYP.



CUSTOMER PRINT
SHEET 1 OF 2

2	REVISED TOLERANCE BLOC WITH SPECIAL TOLERANCES	5831	12/8/2017	KAB	MR
1	ADDED PIN MATERIAL TO NOTES, ADDED C'SINK DIA. REVERSED HINGE SHAFT LOOP POSITIONS	5827	11/3/2017	KAB	MR
	RELEASE TO PRODUCTION/REF:PP12072 WAS M12072-67	5819	9/8/2017	KAB	MR
REV	DESCRIPTION	EN	DATE	REV. BY	APVD. BY

LINEAR MEASURE: mm[INCH]
DATE 9/7/2017
SPECIAL TOLERANCES
UNLESS OTHERWISE SPECIFIED TOLERANCES ARE AS PER DIN-ISO 2768-M

DR. BY KBraun
SCALE 2X
CHK. BY MR

EBERHARD MANUFACTURING CO.
DIVISION OF
THE EASTERN COMPANY
CLEVELAND, OHIO 44149-9712
THIS DOCUMENT IS IN ACCORDANCE WITH ASME Y14.5-2009

NAME
HINGE ASSEMBLY, 20 SERIES 4-HOLE

MATERIAL
PART NUMBER
12067