

PROJ. NO: 3728

DESTROY ALL PRINTS PREVIOUS TO

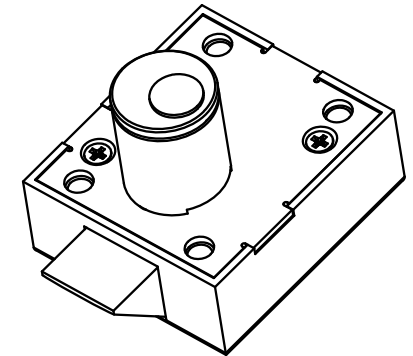
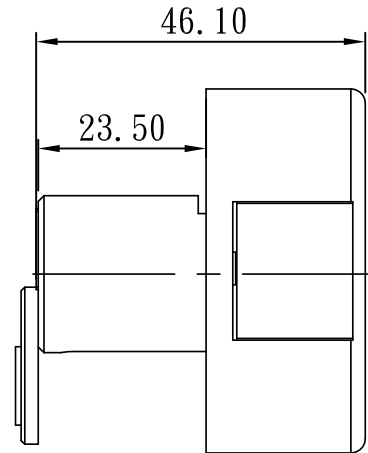
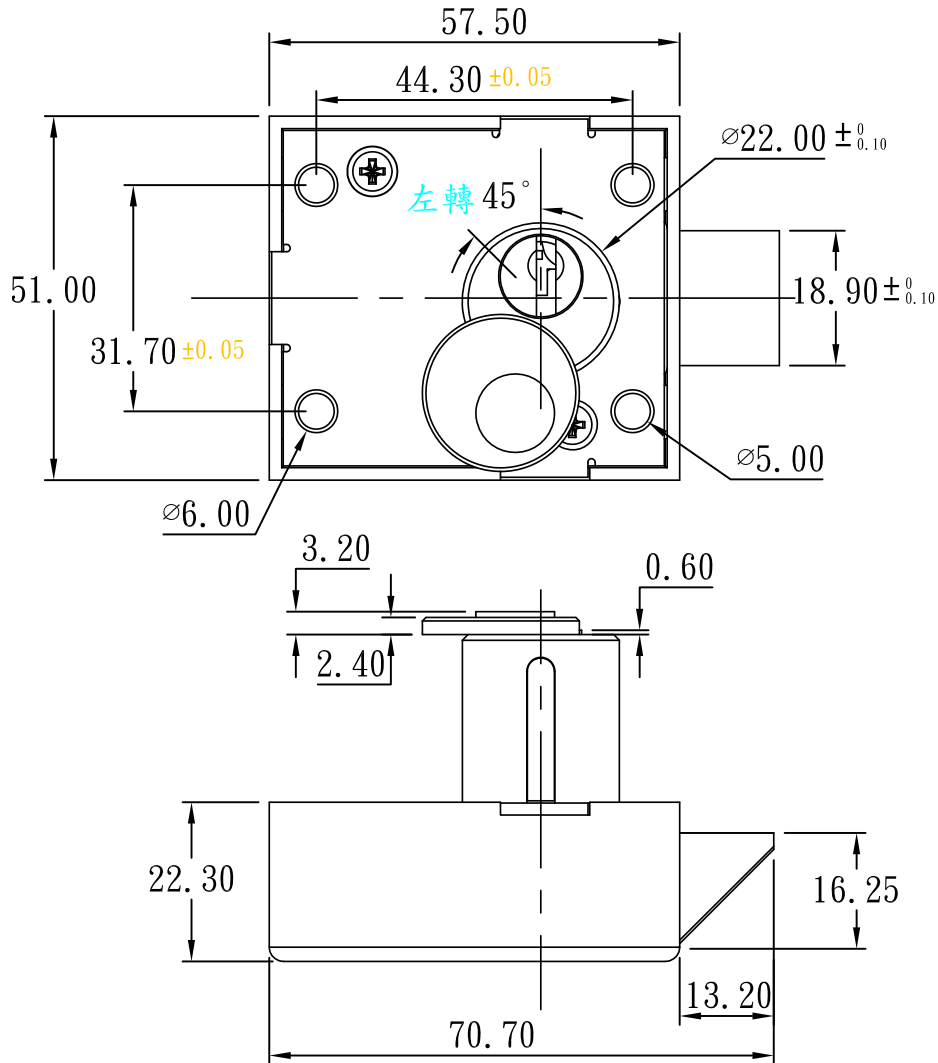
PART NO:

15481RS5054

REV. NO.

0

7/5/2017



**NOTES:**

1. LOCK CAN BE MASTER-KEYED.
2. RIGHT HANDED SLAMBOLT, WITH CR KEYWAY.
3. LOCK TO BE POLY-BAGGED ALONG WITH 2 RUNG KEYS.
3. ALL DIMS ARE IN (MM).

THIS DRAWING IS THE EXCLUSIVE PROPERTY OF THE ILLINOIS LOCK COMPANY / CCL SECURITY PRODUCTS, AND IS SUBMITTED ONLY ON A CONFIDENTIAL BASIS. UNAUTHORIZED USE OR DISCLOSURE OF ITS CONTENTS AND REPRODUCTION IS PROHIBITED. THIS DRAWING, UNLESS OTHERWISE DIRECTED IS TO BE RETURNED TO THE ILLINOIS LOCK COMPANY / CCL SECURITY PRODUCTS.

**Illinois Lock Company**



SECURITY PRODUCTS

WHEELING, IL.

MATERIAL: BRASS

TOLERANCES, UNLESS OTHERWISE SPECIFIED

FINISH:

ENG.:

SCALE:

CHECKED BY: A.O.

DATE: 7/5/2017

Issue #2 March 10, 2015

PRINTED COPIES ARE UNCONTROLLED

VALUE	INCHES [ mm ]
X.	± .030 [ .762 ]
X.X	± .015 [ .381 ]
X.XX	± .010 [ .254 ]
X.XXX	± .005 [ .127 ]
FRACTIONS: ± 1/32	ANGLES: ± 2°

15481 ENCLOSURE LOCK

CUST. NAME:

CUST. PART NO:

SHEET: 1 OF 1

QF05-02