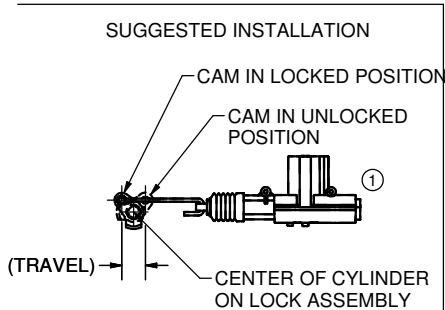
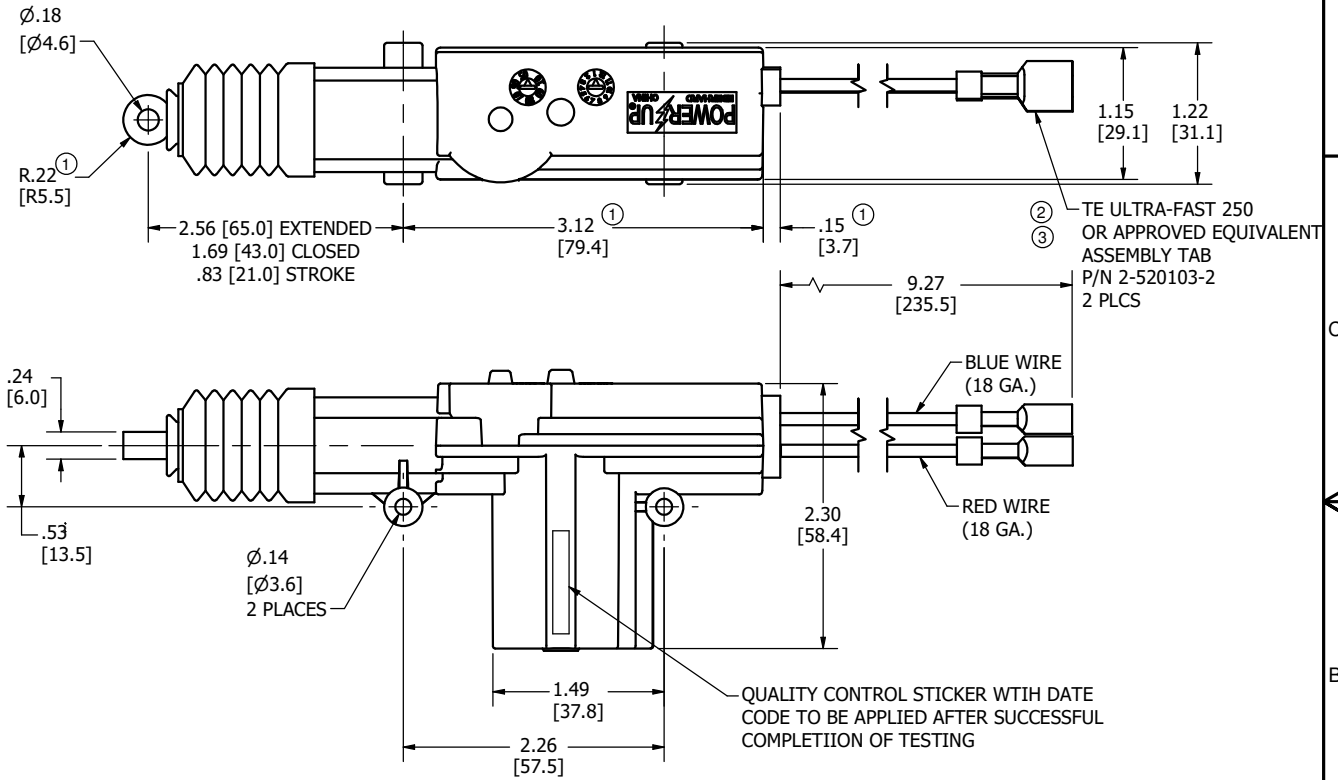


CONFIDENTIAL NOTICE: This drawing and the designs, specifications and engineering information disclosed hereon are the property of Eberhard Manufacturing Company and are not to be disseminated or reproduced without express written consent. The drawing is loaned in confidence and then only for consideration of the matter disclosed hereon. In accepting loan of this drawing, recipient agrees to keep it and the matter disclosed hereon in confidence and not to use nor permit their use in any way detrimental to Eberhard Manufacturing Company, Division of the Eastern Company, 21944 Drake Road, Cleveland, Ohio 44149-9712 © 2018 EBERHARD MFG. CO.

REVISION HISTORY					
REV	DESCRIPTION	EN	DATE	REV. BY	APVD. BY
	RELEASED, REF PP 12420-B	5861	7-13-18	FLP	MR
1	ADD 3.12, .15, R.22, INVERT VIEW	5867	8/24/2018	VRB	MR
2	CHANGE CONNECTOR CALLOUT	5935	1-10-2020	VRB	MR
3	ADD APPROVED EQUIVALENT	5946	3-27-2020	VRB	MR

MOTOR DIRECTION

CONNECTOR	RED	BLUE
DIRECTION		
LOCK	-	+
UNLOCK	+	-



16720-1 PK POWER ACTUATOR MOUNTING RELATIONSHIP WITH CYLINDER LOCKING CAM SCALE: 1/4



WARNING LABEL

TECHNICAL DATA:

1. WORKING VOLTAGE: 9 - 16 VDC
2. CURRENT ABSORPTION: 4.5 A (MAX.)
3. TEMPERATURE RANGE: -40C TO +80C DEGREE (-40F TO 176F)
4. POWER: >6 KGS (AT 12 VOLTS)

CUSTOMER PRINT SHEET 1 OF 2

EBERHARD MANUFACTURING CO. DIVISION OF THE EASTERN COMPANY CLEVELAND, OHIO 44149-9712	
POWER ACTUATOR WITH THERMAL PROTECTION AND INCREASED STRENGTH MATERIAL	
MATERIAL	PART NUMBER
*	16720-1-PK

THIS DOCUMENT IS IN ACCORDANCE WITH ASME Y14.5-2009			
LINEAR MEASURE: INCH		DATE	
UNLESS OTHERWISE SPECIFIED TOLERANCES ARE AS FOLLOWS:		7/13/2018	
		DR. BY	
		FLP	
ANGLES:	± 2° ± 2°	SCALE	
2 PLACE DEC.:	± .03 ± .76	FULL	
3 PLACE DEC.:	± .015 ± .38	CHK. BY	
ALL HOLES:	± .005 ± .13		

C:\Working_Folder\Archive\Pro\116XXX\167xx\16720-1-PK SH1.dwg