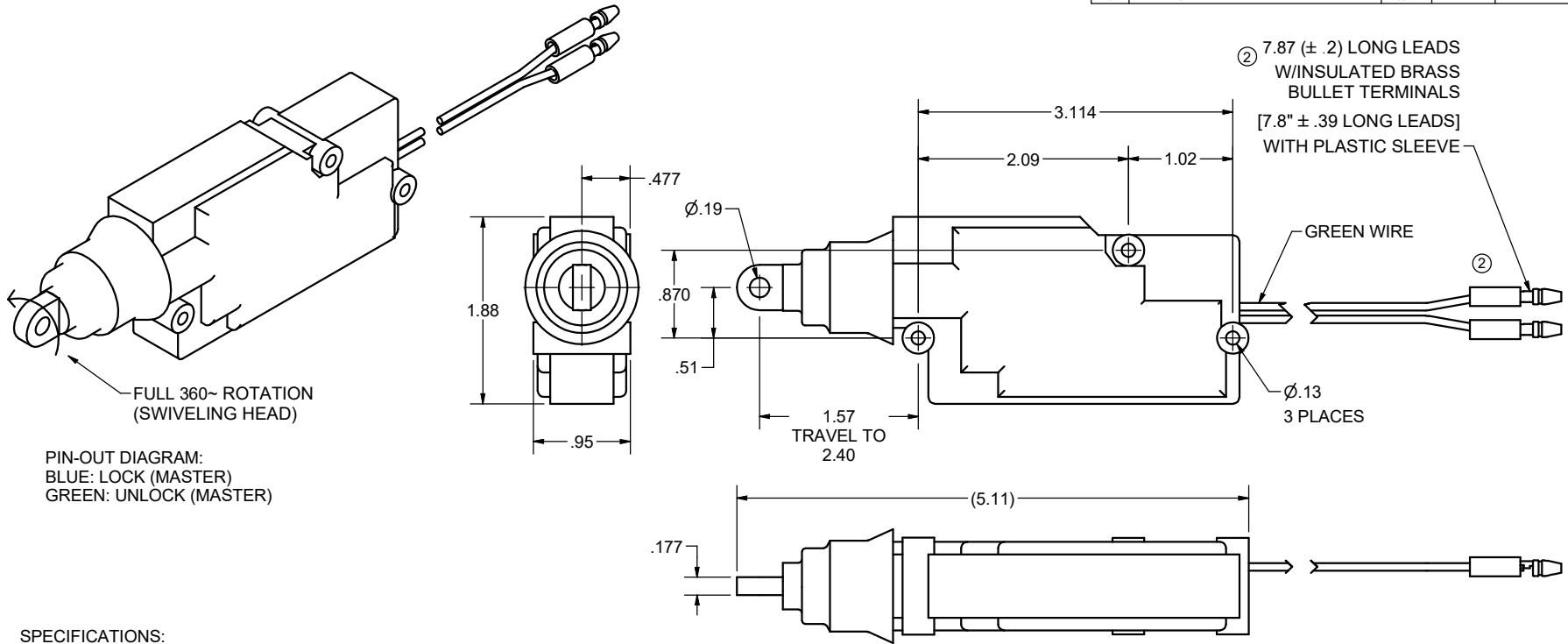


CONFIDENTIAL NOTICE: This drawing and the designs, specifications and engineering information disclosed hereon are the property of Eberhard Manufacturing Company and are not to be disseminated or reproduced without express written consent. The drawing is loaned in confidence and then only for consideration of the matter disclosed hereon. In accepting loan of this drawing, recipient agrees to keep it and the matter disclosed hereon in confidence and not to use nor permit their use in any way detrimental to Eberhard Manufacturing Company, Division of the Eastern Company, 21944 Drake Road, Cleveland, Ohio 44149-9712 © 2014 EBERHARD MFG. CO.

REVISION HISTORY					
REV	DESCRIPTION	EN	DATE	REV BY	APVD BY
	RELEASED	5641	2-14-14		
1	ADDED VIEW	5671	9-12-14		
2	REVISED NOTE, REVISED VIEW	5792	3-3-17	FLP	MR
3	REVISED NOTE AND TITLE	5811	7-14-17	FLP	MR

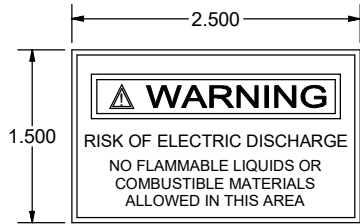
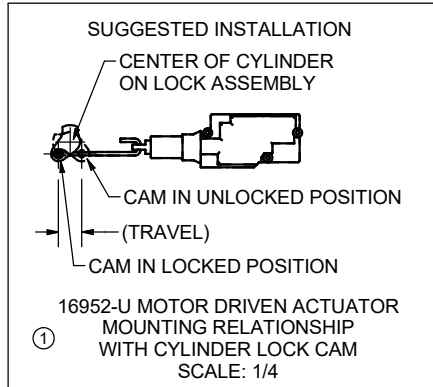


PIN-OUT DIAGRAM:
 BLUE: LOCK (MASTER)
 GREEN: UNLOCK (MASTER)

SPECIFICATIONS:
 GEAR MOTOR DRIVEN DIRECTED CLUTCH ACTUATOR
 FORCE: 45 NEWTONS
 VOLTAGE: 9 TO 16 VDC
 NOMINAL CURRENT DRAW: 2A
 ENDURANCE: 30,000 CYCLES
 OPERATIONAL TEMPERATURE RANGE: -30 TO +85 DEG. C

- ③ OVERLOAD PROTECTED LOCK MOTOR - PTC (POSITIVE TEMPERATURE COEFFICIENT) THERMAL PROTECTION
- WATER RESISTANT BOOT SEALED
- REINFORCED ENGINEERING PLASTIC CASING FOR WEATHER RESISTANCE
- GUIDED SHAFT FOR SMOOTH OPERATION AND REDUCED SHAFT TWISTING
- ROTATABLE & CHANGEABLE HEAD
- BUILT-IN 200mm LEADS

MOTOR DRIVEN ACTUATOR AND WARNING LABEL SHIPPED IN EQUAL QUANTITIES



UNLESS OTHERWISE SPECIFIED TOLERANCES ARE AS FOLLOWS:		DATE 2/14/2014	NAME
ANGLES:	± 2'	DR BY FLP	
2 PLACE DEC.:	± .03	SCALE FULL	
3 PLACE DEC.:	± .015	CHK BY	
ALL HOLES:	± .005		

CUSTOMER PRINT SHEET 1 OF 2

EBERHARD MANUFACTURING CO.
 DIVISION OF
 THE EASTERN COMPANY
 CLEVELAND, OHIO 44149-9712

MOTOR DRIVEN ACTUATOR WITH THERMAL PROTECTION ③

MATERIAL: ----- PART NUMBER: 16952-U