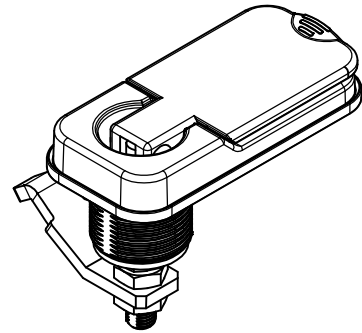
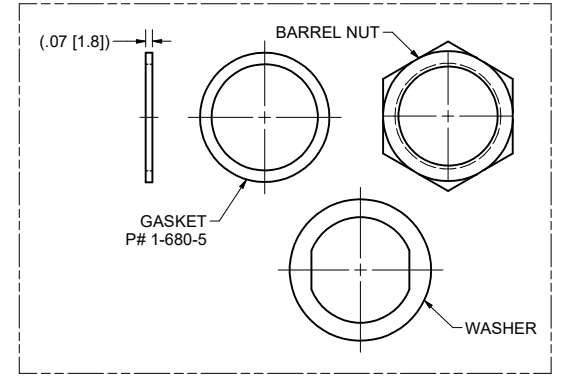
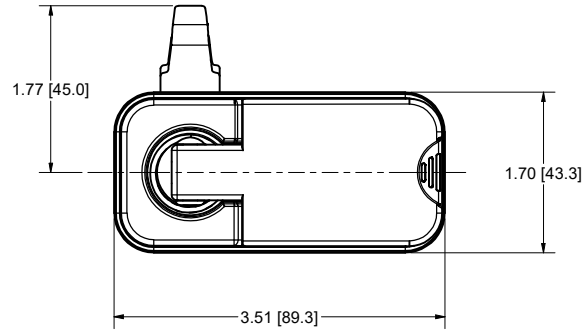


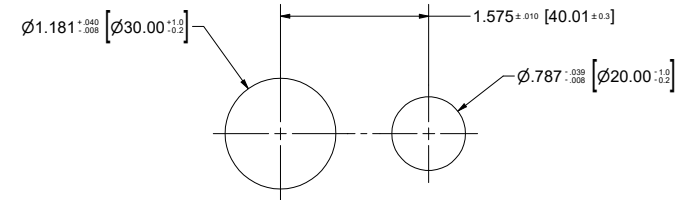
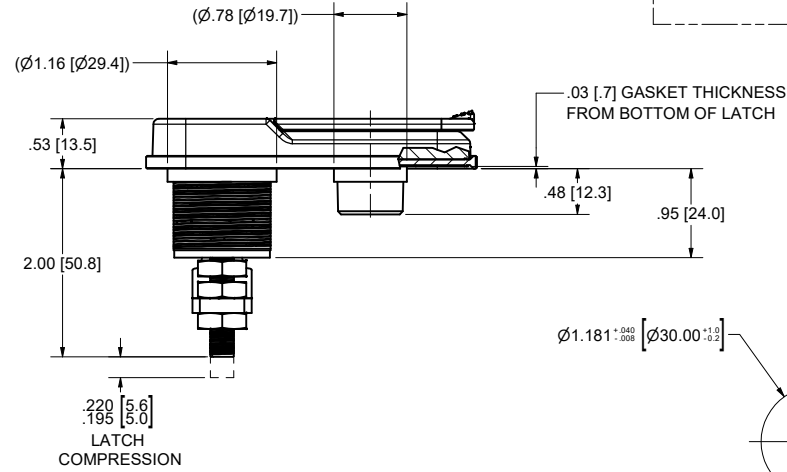
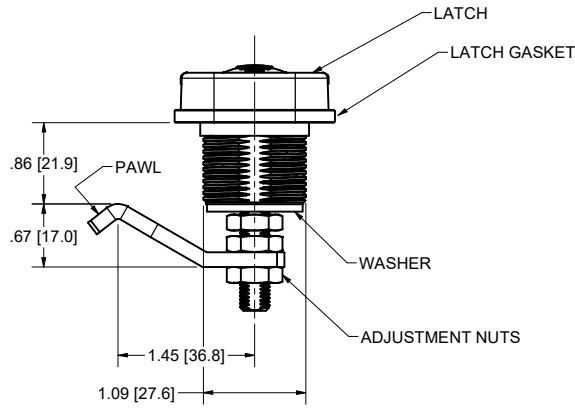
| REVISION HISTORY | | | | | | |
|------------------|----------------------------------------------------------------|------|-----------|---------|----------|--|
| REV | DESCRIPTION | EN | DATE | REV. BY | APVD. BY | |
| 0 | RELEASE TO PRODUCTION: REF NPD 50079 | 6140 | 3/8/2024 | KAB | MR | |
| 1 | MODELS UPDATED TO CORRECT ORIENTATION FOR PAWL | 6160 | 7/26/2024 | KAB | MR | |
| 2 | ADDED BREAKOUT VIEW FOR GASKET, ADDED GASKET MATERIAL TO NOTES | 6161 | 8/2/2024 | KAB | MR | |
| 3 | ADDED STRUCTURE FOR PACKAGING BARREL NUT, WASHER, AND GASKET. | 6167 | 9/13/2024 | KAB | MR | |



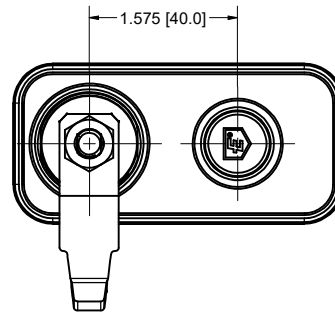
ROTATION 180°



ITEMS TO BE PACKED TOGETHER IN SEPARATE BAG



SUGGESTED CUTOUT



- NOTES:
 1, UNSPECIFIED TOLERANCE +/- .010
 2, MATERIAL AND PLATING MEET ROHS
 3, REFERENCE 3D MODEL FOR DETAILS.
 4, FINISH: (42) BLACK POWDER COAT (TEXTURED)
 5, GASKET MATERIAL: EPDM

EBERHARD MANUFACTURING CO.
 DIVISION OF
 THE EASTERN COMPANY
 CLEVELAND, OHIO 44149-9712

NAME: **LIFT & TURN LATCH NON-LOCKING, CIRCLE MOUNT**

MATERIAL: **SEE NOTES** PART NUMBER: **1816-NL**

| | | | |
|-----------------------------------------------------|--------|-----------|-----|
| THIS DOCUMENT IS IN ACCORDANCE WITH ASME Y14.5-2009 | | | |
| LINEAR MEASUREMENT (INCHES) | | DATE | |
| UNLESS OTHERWISE SPECIFIED | | 7/26/2024 | |
| TOLERANCES ARE AS FOLLOWS: | | DWN. BY | |
| ANGLES: | ± .2° | SCALE: | 1:1 |
| 2 PLACE DEC.: | ± .03 | CHR. BY: | |
| 3 PLACE DEC.: | ± .015 | | |
| ALL HOLES: | ± .005 | | |