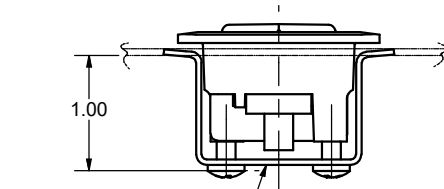
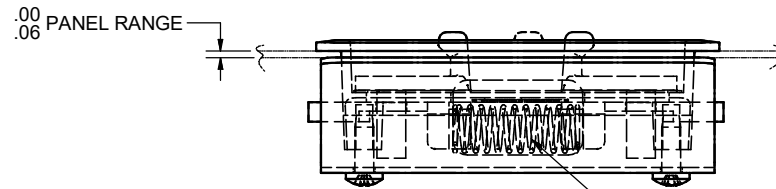
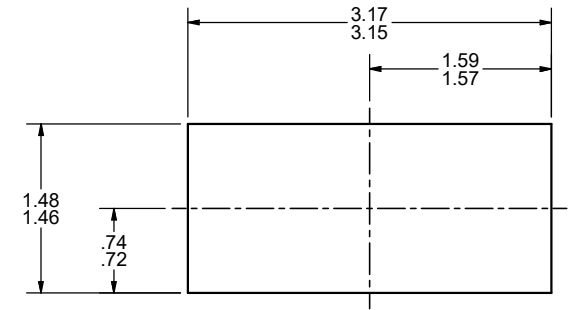
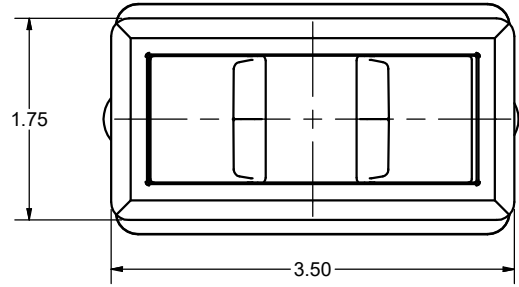


CONFIDENTIAL NOTICE: This drawing and the designs, specifications and engineering information disclosed herein are the property of Eberhard Manufacturing Company and are not to be disseminated or reproduced without express written consent. The drawing is loaned in confidence and then only for consideration of the matter disclosed herein. In accepting loan of this drawing, recipient agrees to keep it and the matter disclosed herein in confidence and not to use nor permit their use in any way detrimental to Eberhard Manufacturing Company, Division of the Eastern Company, 21944 Drake Road, Cleveland, Ohio 44149-9712 © 2016 EBERHARD MFG. CO.

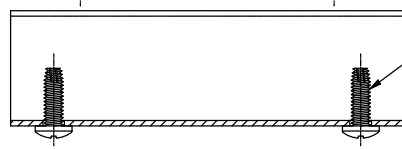
REVISION HISTORY			
REV	DESCRIPTION	EN	DATE
1	CONVERTED TO 3D	5589	2-1-13



PUSH NUT  
2 REQ'D  
SHIPPED LOOSE  
IN POLY BAG

SPRING RATE  
5.00 IN./LBS.

MOUNTING BRACKET  
SHIPPED LOOSE



SELF-TAPPING  
SCREW  
2 REQ'D  
SHIPPED LOOSE  
IN POLY BAG

CUSTOMER PRINT  
SHEET 1 OF 2

NOTE: AVAILABLE FINISHES:  
A. BRIGHT CHROME, FC (04)  
B. EVERLUBE, FC (69)

**EBERHARD MANUFACTURING CO.**  
DIVISION OF  
**THE EASTERN COMPANY**  
CLEVELAND, OHIO 44149-9712

THIS DOCUMENT IS IN ACCORDANCE WITH ASME Y14.5-2009		DATE 2/2/2013
LINEAR MEASURE: INCH		DR BY FLP
UNLESS OTHERWISE SPECIFIED TOLERANCES ARE AS FOLLOWS:		SCALE FULL
ANGLES:	± 2° ± 2°	CHK BY
2 PLACE DEC.:	± .03 ± .76	
3 PLACE DEC.:	± .015 ± .38	
ALL HOLES:	± .005 ± .13	

NAME  
**TWO POINT SQUEEZE LATCH CENTER CASE W/MOUNTING BRACKET**

MATERIAL  
-----

PART NUMBER  
**2-560-P8**

SUPERSEDES DRAWING 2-560-P8 SHEET 1 OF 2 DATED 6-3-05.

C:\TEMP\9b34617d-a71a-4cc5-a471-9e82655c8bab\Pro\515602-560-P8 SH1.dwg