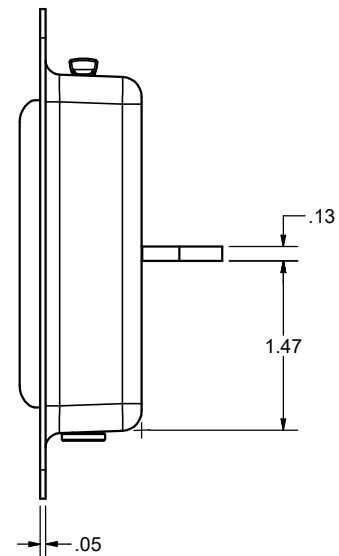
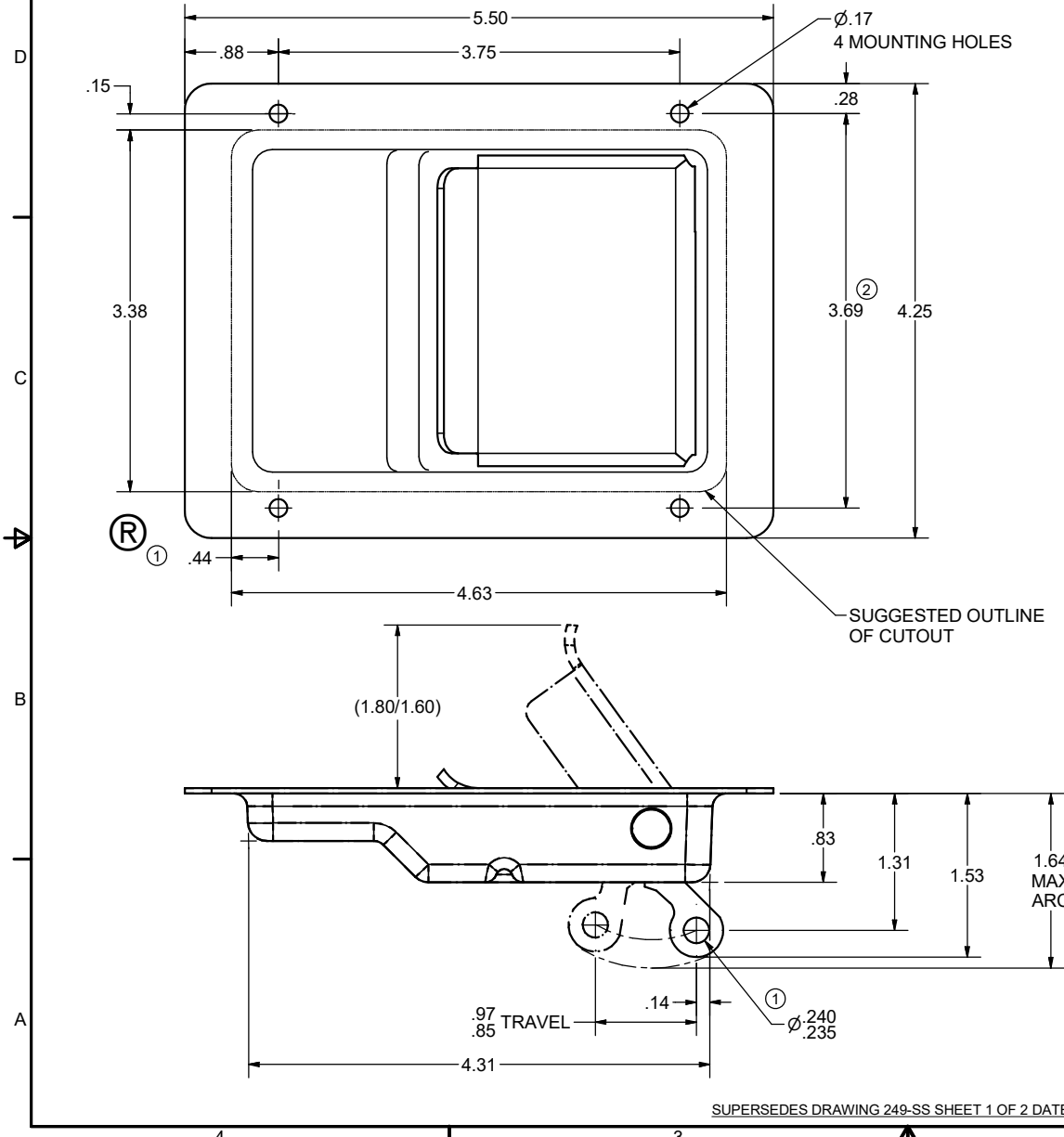


CONFIDENTIAL NOTICE: This drawing and the designs, specifications and engineering information disclosed hereon are the property of Eberhard Manufacturing Company and are not to be disseminated or reproduced without express written consent. The drawing is loaned in confidence and then only for consideration of the matter disclosed hereon. In accepting loan of this drawing, recipient agrees to keep it and the matter disclosed hereon in confidence and not to use nor permit their use in any way detrimental to Eberhard Manufacturing Company, Division of the Eastern Company, 21944 Drake Road, Cleveland, Ohio 44149-9712 © 2016 EBERHARD MFG. CO.

REVISION HISTORY					
REV	DESCRIPTION	EN	DATE	REV BY	APVD BY
	REVISED, REDRAWN AND CONVERTED TO 3D	5579	11-9-12		
1	ADDED: NOTE, .240/.235 DIA. (R)	5775	10-21-16	FLP	MR
2	WAS 3.68	5907	6-14-19	KLS	MR



① NOTE: REGISTERED IN THE U.S. PATENT AND TRADEMARK OFFICE.

SUPERSEDES DRAWING 249-SS SHEET 1 OF 2 DATED 3-22-93.

THIS DOCUMENT IS IN ACCORDANCE WITH ASME Y14.5-2009		DATE	11/8/2012
UNLESS OTHERWISE SPECIFIED TOLERANCES ARE AS FOLLOWS:		DR BY	FLP
		SCALE	FULL
ANGLES: ± 2° ± 2°		CHK BY	
2 PLACE DEC.: ± .03 ± .76			
3 PLACE DEC.: ± .015 ± .38			
ALL HOLES: ± .005 ± .13			

CUSTOMER PRINT SHEET 1 OF 2

EBERHARD MANUFACTURING CO. DIVISION OF THE EASTERN COMPANY CLEVELAND, OHIO 44149-9712	
NAME PADDLE LOCK ASSEMBLY (NON LOCKING)	
MATERIAL -----	PART NUMBER 249-SS