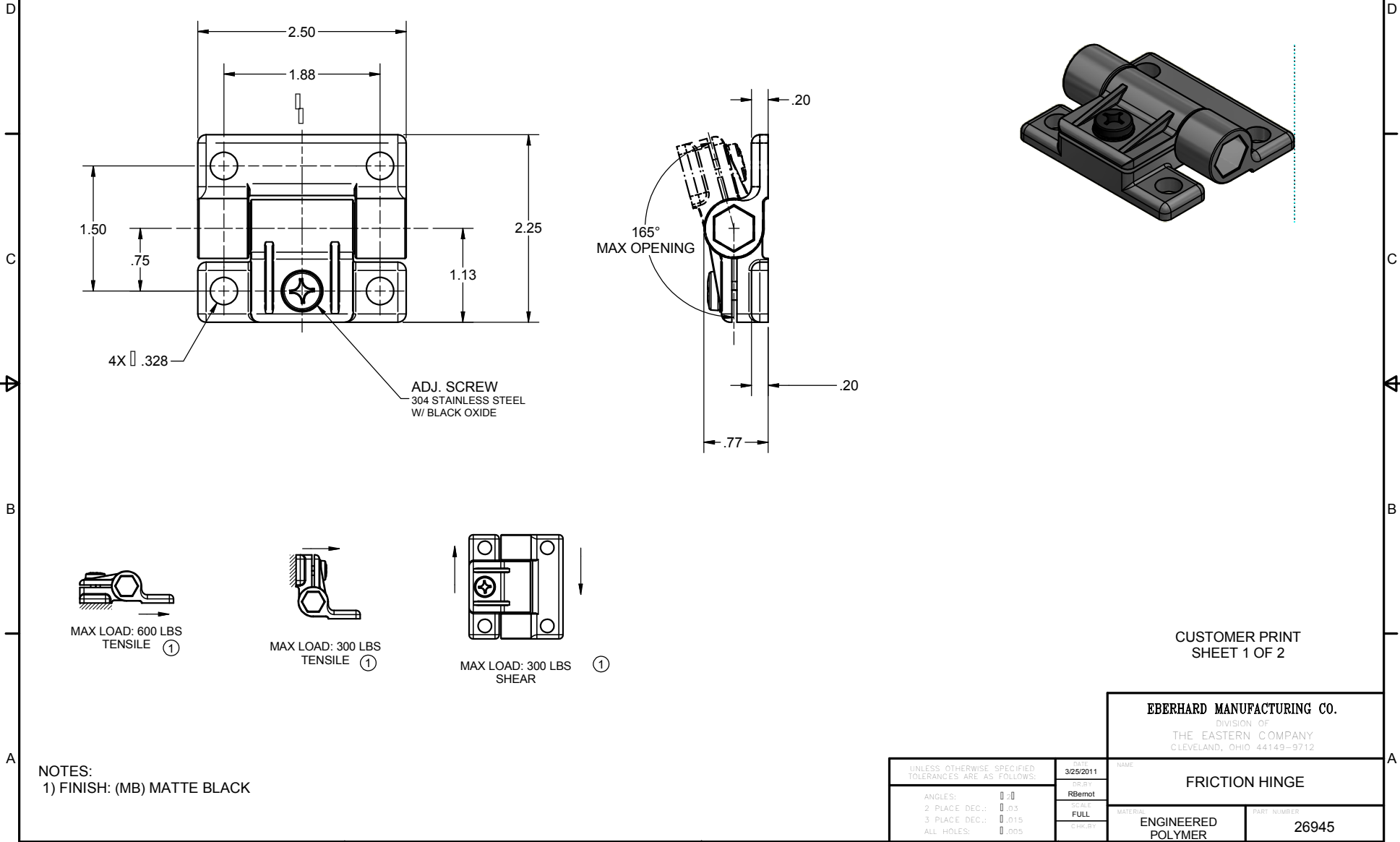


CONFIDENTIAL NOTICE: This drawing and the designs, specifications and engineering information disclosed hereon are the property of Eberhard Manufacturing Company and are not to be disseminated or reproduced without express written consent. The drawing is loaned in confidence and then only for consideration of the matter disclosed hereon. In accepting loan of this drawing, recipient agrees to keep it and the matter disclosed hereon in confidence and not to use nor permit their use in any way detrimental to Eberhard Manufacturing Company, Division of the Eastern Company, 21944 Drake Road, Cleveland, Ohio 44149-9712 © 2009 EBERHARD MFG. CO.

REVISION HISTORY			
REV	DESCRIPTION	EN	DATE
-	RELEASED WAS M10183	5496	3/25/2011
1	600 WAS 896, 300 WAS 670, 300 WAS 417	5569	8/31/2012



CUSTOMER PRINT SHEET 1 OF 2

EBERHARD MANUFACTURING CO.  
DIVISION OF  
THE EASTERN COMPANY  
CLEVELAND, OHIO 44149-9712

FRICITION HINGE

UNLESS OTHERWISE SPECIFIED TOLERANCES ARE AS FOLLOWS:	DATE: 3/25/2011	NAME:
	DR. BY: RBernot	
ANGLES: 0.00	SCALE: FULL	MATERIAL: ENGINEERED POLYMER
2 PLACE DEC.: 0.03	CHK. BY:	PART NUMBER: 26945
3 PLACE DEC.: 0.015		
ALL HOLES: 0.005		

C:\Working\_Folder\Archive\Pro\2026XXXX\26945\26945 SH1.dwg