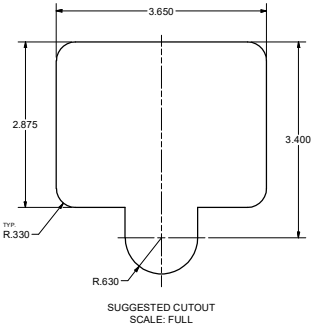
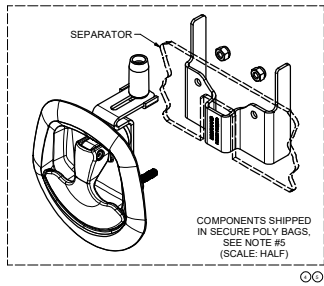
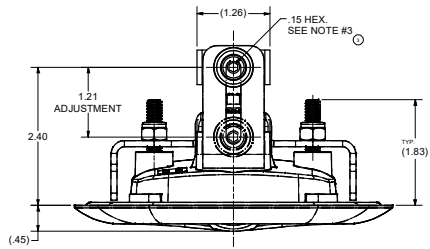
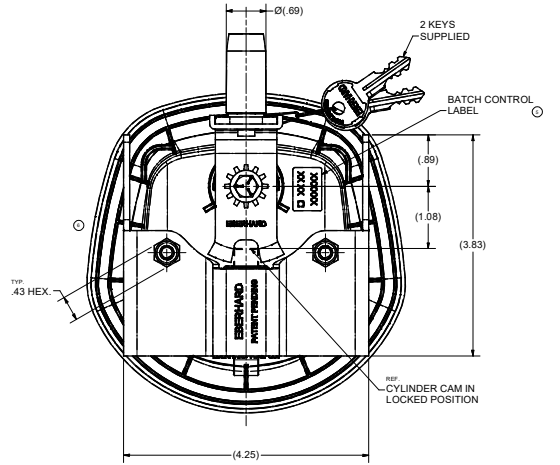
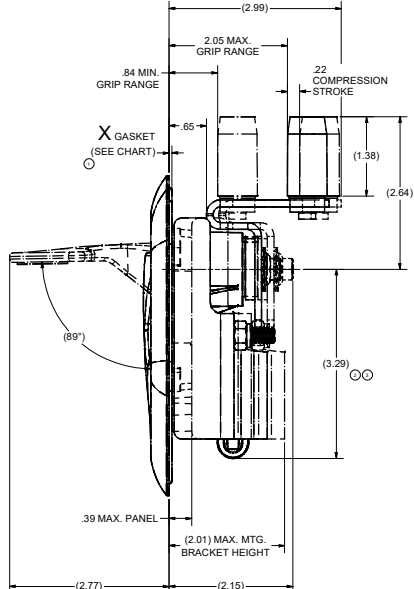
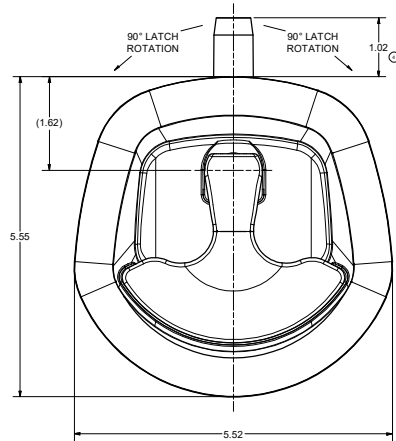
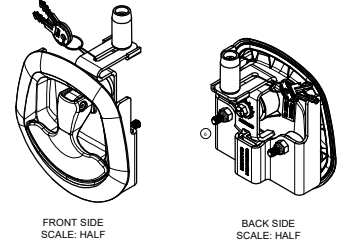


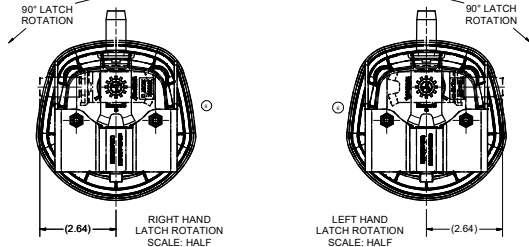
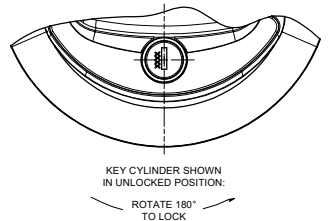
**CONFIDENTIAL NOTICE:** This drawing and the design, specifications and engineering information it contains are the property of Eberhard Manufacturing Company and are not to be disseminated or reproduced without express written consent. The drawing is issued in confidence and may only be used for the purposes of the order. It is the responsibility of the customer to ensure that the drawing is not used for any other purpose. Eberhard Manufacturing Company does not warrant the accuracy of the drawing, and the customer shall be responsible for verifying the accuracy of the drawing and for any errors that may occur in any way.



REVISION HISTORY					
REV	DESCRIPTION	EN	DATE	REV. BY	APVD. BY
	RELEASED, WAS 7-M11718 SHEET 1 OF 2	EN 5861	7/13/2018	SAA	LSW
1	REVISED VIEWS TO DETAIL, ADDED CHART, REVISED/ADDED NOTES, REVISED DIMENSION	EN 5869	9/7/2018	SAA	LSW
2	REVISED DIMENSION CHART	EN 5881	12/7/2018	SAA	LSW
3	REVISED DIMENSIONS, ADDED NOTE	EN 5930	11/22/2019	SAA	LSW
4	REVISED DIMENSION, REVISED/ADDED NOTES	EN 5935	1/10/2020	SAA	LSW
5	REVISED VIEW/NOTE, ADDED BATCH CONTROL LABEL	EN 5945	3/20/2020	SAA	LSW
6	REVISED VIEWS TO DETAIL	EN 5947	4/3/2020	SAA	LSW



GASKET THICKNESS			
PART NUMBER	X DIM.	GASKET TYPE	
28500	.05	25 DUROMETER TPE (O-RING)	
28500-A	.20	30 DUROMETER EPDM CLOSED CELL SPONGE	



- NOTES:
- FINISHES:
    - A) BLACK PLASTIC RECEPTACLE (TEXTURED), CHROME HANDLE, FC (03)
    - B) BLACK PLASTIC RECEPTACLE (TEXTURED), BLACK POWDER (TEXTURED) HANDLE, FC (42)
  - ASSEMBLY SHIPPED IN THE UNLOCKED POSITION.
  - RECOMMENDED TORQUE FOR TIGHTENING ADJUSTABLE ROLLER SCREW: 40-50 in.-lbs. MAX.
  - ASSEMBLIES SHIPPED IN A PARTITIONED BOX WITH THE HANDLE ASSEMBLY PLACED IN A SECURE POLY BAG AND THE MOUNTING BRACKET AND TWO HEX NUTS PLACED IN A SEPARATE SECURE POLY-BAG WITH A SEPARATOR BETWEEN THE COMPONENTS.
  - KEY CYLINDER WITH 10 KEY CHANGES, J201 THRU J210
  - SUPPLIED WITH TWO DOUBLE BITTED KEYS  
EXAMPLE ORDER AS: 28500-A-JXXX-XX

ADD "A" FOR THICKER GASKET  
FINISH CODE SEE NOTE #1  
KEY NUMBER

MATERIALS		FINISH	
DESCRIPTION	QTY	FINISH CODE	FINISH
BLACK PLASTIC RECEPTACLE (TEXTURED)	1	FC (03)	CHROME
BLACK PLASTIC RECEPTACLE (TEXTURED)	1	FC (42)	BLACK POWDER
ADJUSTABLE ROLLER SCREW	1		
KEY CYLINDER	1		
KEY	2		
MOUNTING BRACKET	1		
HEX NUT	2		
GASKET	1		

CUSTOMER PRINT SHEET 1 OF 2

**EBERHARD MANUFACTURING CO.**  
DIVISION OF THE EASTERN COMPANY  
CLEVELAND, OHIO 44116-9712

KEY LOCKING SINGLE POINT COMPRESSION LATCH

C:\TEMP\67420-2854-4d4b-4d01-c6c7bac350\p1022850028500\_8H1.dwg