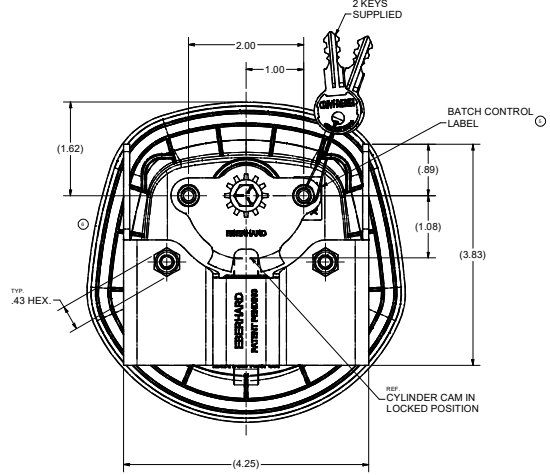
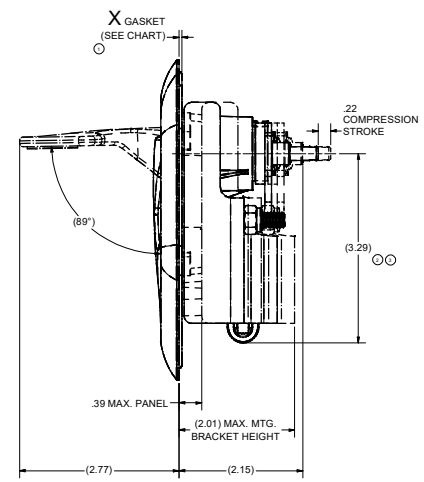
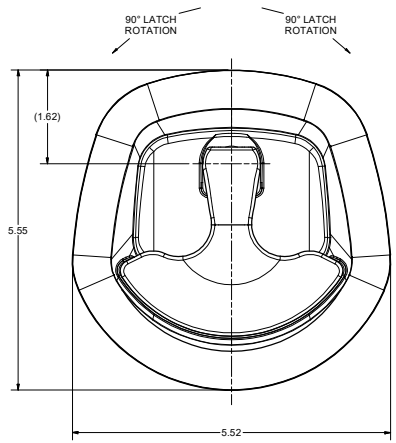
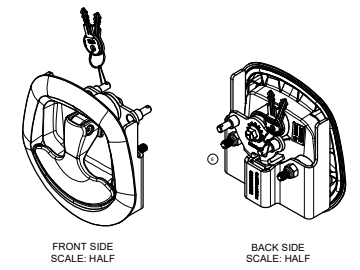
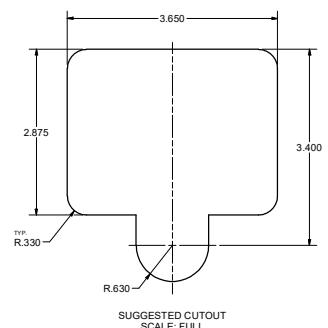
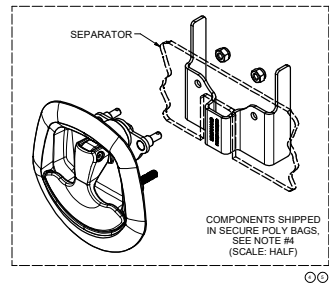
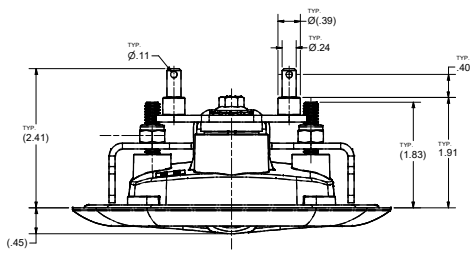


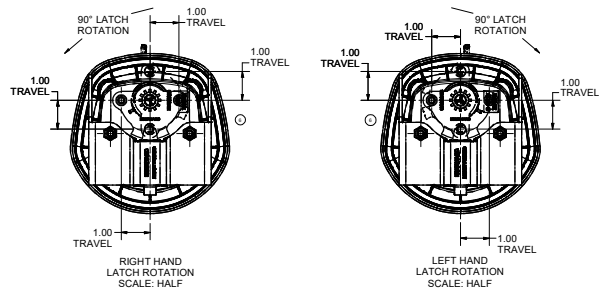
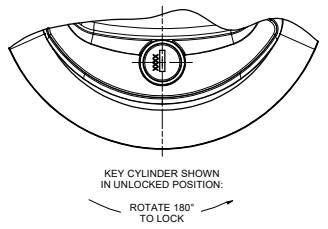
CONFIDENTIAL NOTICE: This drawing and the design, specifications and approvals are the intellectual property and the property of Eberhard Manufacturing Company and are not to be disseminated or reproduced without express written approval from Eberhard Manufacturing Company. This drawing is confidential and the user is authorized to use it only for the specific application for which it was prepared. It is not to be used for any other purpose without the express written approval of Eberhard Manufacturing Company. Eberhard Manufacturing Company reserves the right to change this drawing without notice.

REVISION HISTORY					
REV	DESCRIPTION	EN	DATE	REV. BY	APVD. BY
	RELEASED, WAS 8-M11718 SHEET 1 OF 2	EN 5861	7/13/2018	SAA	LSW
1	REVISED VIEWS TO DETAIL, ADDED CHART, DIMENSION	EN 5869	9/7/2018	SAA	LSW
2	REVISED DIMENSION/CHART	EN 5881	12/7/2018	SAA	LSW
3	REVISED DIMENSION	EN 5930	11/22/2019	SAA	LSW
4	REVISED/ADDED NOTES	EN 5935	1/10/2020	SAA	LSW
5	REVISED VIEW/NOTE, ADDED BATCH CONTROL LABEL	EN 5645	3/20/2020	SAA	LSW
6	REVISED VIEWS TO DETAIL	EN 5647	4/3/2020	SAA	LSW



GASKET THICKNESS			
PART NUMBER	X DIM.	GASKET TYPE	
28520	.05	25 DUROMETER TPE (O-RING)	
28520-A	.20	30 DUROMETER EPDM CLOSED CELL SPONGE	

- NOTES:
- FINISHES:
A) BLACK PLASTIC RECEPTACLE (TEXTURED), CHROME HANDLE, FC (03)
B) BLACK PLASTIC RECEPTACLE (TEXTURED), BLACK POWDER (TEXTURED) HANDLE, FC (42)
 - ASSEMBLY SHIPPED IN THE UNLOCKED POSITION.
 - RECOMMENDED TORQUE FOR TIGHTENING MOUNTING HEX NUTS: 10 in.-lbs. MAX.
 - ASSEMBLIES SHIPPED IN A PARTITIONED BOX WITH THE HANDLE ASSEMBLY PLACED IN A SECURE POLY-BAG AND THE MOUNTING BRACKET AND TWO HEX NUTS PLACED IN A SEPARATE SECURE POLY-BAG WITH A SEPARATOR BETWEEN THE COMPONENTS.
 - KEY CYLINDER WITH 10 KEY CHANGES, J201 THRU J210 SUPPLIED WITH TWO DOUBLE BITTED KEYS
EXAMPLE ORDER AS: 28520-A-JXXX-XX



ADD "A" FOR THICKER GASKET
FINISH CODE SEE NOTE #1
KEY NUMBER

CUSTOMER PRINT SHEET 1 OF 2

EBERHARD MANUFACTURING CO.
DIVISION OF THE EASTERN COMPANY
CLEVELAND, OHIO 44116-9712

KEY LOCKING TWO POINT COMPRESSION LATCH

28520

THIS DOCUMENT IS IN ACCORDANCE WITH ASME Y14.5-2018

TOLERANCE PRECEDENCE		FINISH	
UNLESS OTHERWISE SPECIFIED	TOLERANCE PRECEDENCE	FINISH	FINISH
ANGLES	± .1	IN	11.43
PLACES DEC.	± .01	IN	0.0254
PLACES DEC.	± .005	IN	0.0127
ALL DIMS.	± .005	IN	0.0127

C:\TEMP\chfbc-1109-4696-ad19-97694-bc-0491-Pro\212820\28520 SH1.dwg