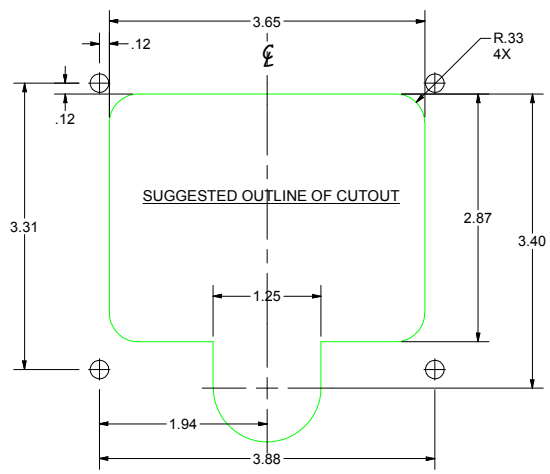
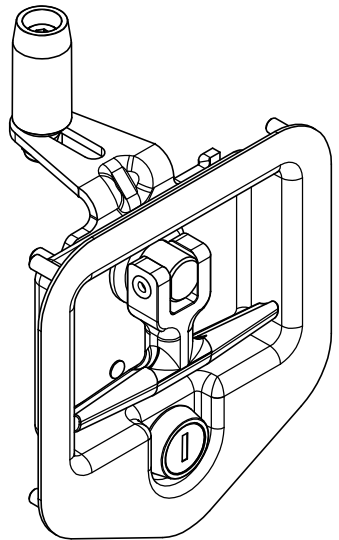


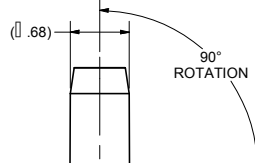
CONFIDENTIAL NOTICE: This drawing and the designs, specifications and engineering information disclosed hereon are the property of Eberhard Manufacturing Company and are not to be disseminated or reproduced without express written consent. The drawing is loaned in confidence and then only for consideration of the matter disclosed hereon. In accepting loan of this drawing, recipient agrees to keep it and the matter disclosed hereon in confidence and not to use nor permit their use in any way whatsoever by Eberhard Manufacturing Company, Division of the Eastern Company, 2184 Drake Road, Cleveland, Ohio 44146-9712, © 2014 EBERHARD MFG. CO.

REVISION HISTORY					
REV	DESCRIPTION	EN	DATE	REV. BY	APVD. BY
1	REDRAWN IN INVENTOR 3D, RELOCATED ORIGIN LABEL LOCATION FROM BACK TO SIDE OF RECEPTACLE	5684	12/19/2014	KAB	MR

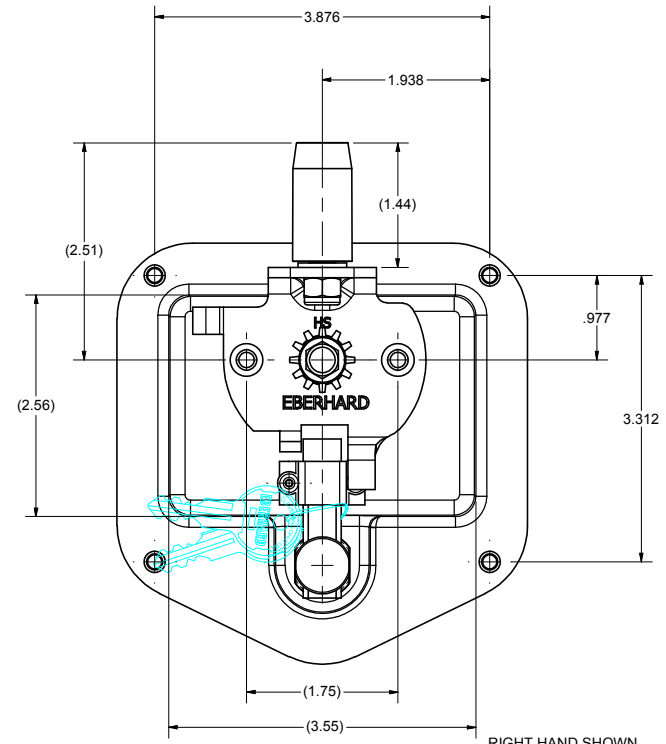
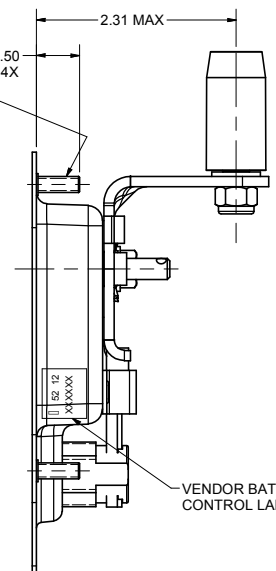


- NOTE:  
 1.) ASSEMBLY FINISH: (10) BRIGHT STAINLESS STEEL W/CHROME HANDLE  
 2.) MAXIMUM TORQUE FOR TIGHTENING THREADED STUD IS 23 IN./LBS.  
 3.) KEY CYLINDER WITH 50 KEY CHANGES, ORDER KEY No. J201 THRU J250  
 4.) EXAMPLE: ORDER KEYNUMBER - 33-48750-SSL-JXXX-10

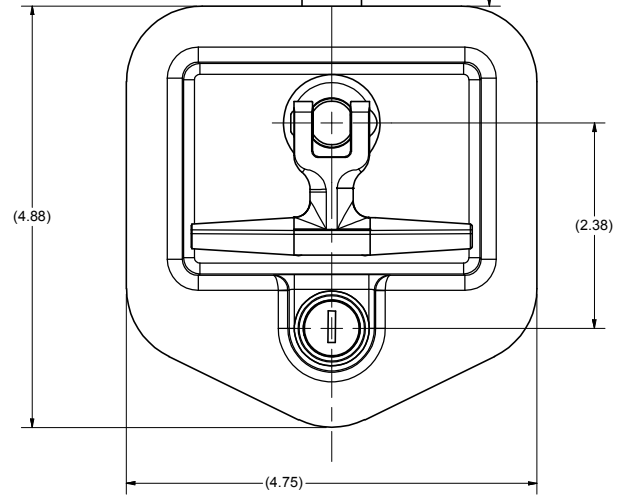
KEY NUMBER



10-24 UNC MOUNTING STUDS 4X



RIGHT HAND SHOWN  
 LEFT HAND OPPOSITE  
 CUSTOMER PRINT  
 SHEET 1 OF 2



THIS DOCUMENT IS IN ACCORDANCE WITH ASME Y14.19-2009		DATE	12/18/2014
UNLESS OTHERWISE SPECIFIED TOLERANCES ARE AS FOLLOWS:		DR BY	K. BRAUN
LINEAR MEASURE: INCH		SCALE	
ANGLES: 1/2 1/4	1/16 1/8	CHECK BY	
2 PLACE DEC: .03 .06	.12 .15	MATERIAL	
3 PLACE DEC: .015 .038	.005 .013	KEY BY	
ALL HOLES:			

<b>EBERHARD MANUFACTURING CO.</b>	
DIVISION OF THE EASTERN COMPANY CLEVELAND, OHIO 44146-9712	
NAME	T-HANDLE ASSEMBLY, 3-POINT
MATERIAL	
PART NUMBER	33-48750-SSRL

SUPERSEDES DRAWING 33-48750-SSRL DATED 09-10-2012.