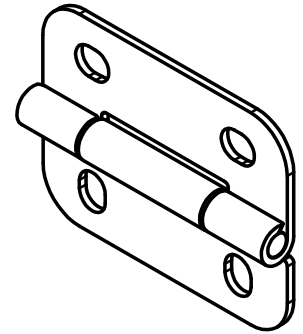
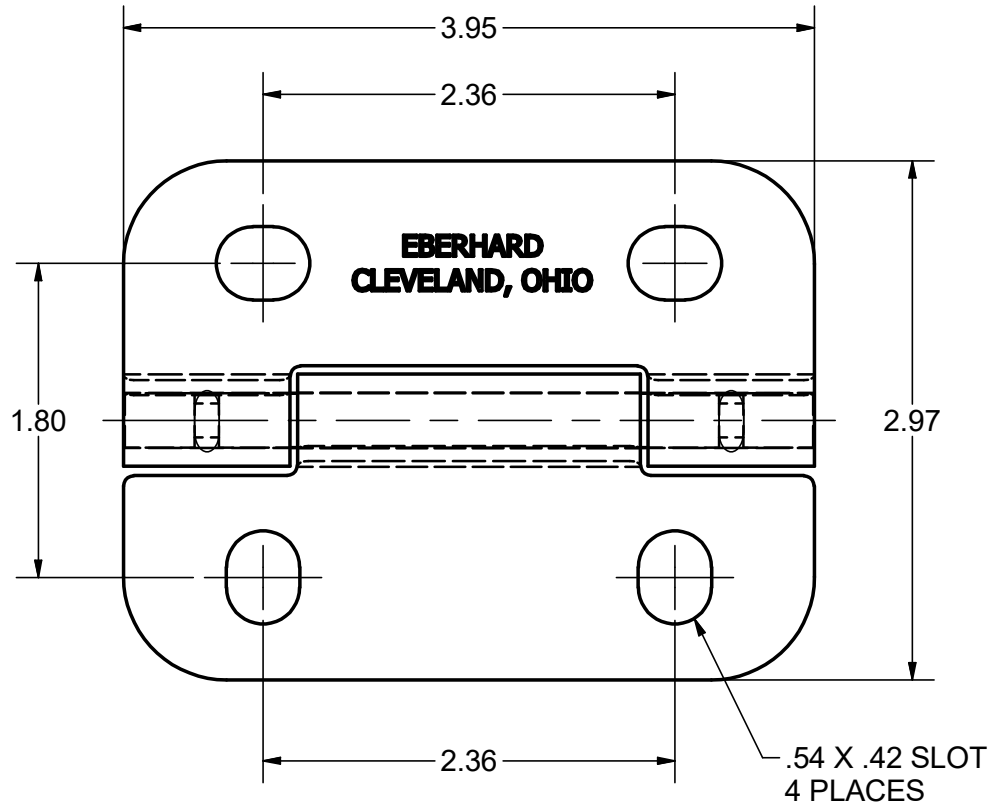
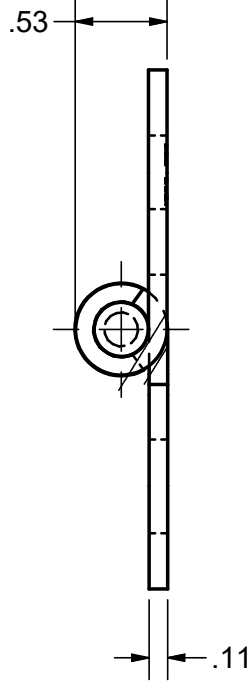


CONFIDENTIAL NOTICE: This drawing and the designs, specifications and engineering information disclosed herein are the property of Eberhard Manufacturing Company and are not to be disseminated or reproduced without express written consent. The drawing is loaned in confidence and then only for consideration of the matter disclosed herein. In accepting loan of this drawing, recipient agrees to keep it and the matter disclosed herein in confidence and not to use nor permit their use in any way detrimental to Eberhard Manufacturing Company, Division of the Eastern Company, 21944 Drake Road, Cleveland, Ohio 44149-9712 © 2012 EBERHARD MFG. CO.



SCALE: HALF

NOTES:

1. MATERIAL: 304 STAINLESS STEEL
2. FINISH: BLACK POWDER POLY SEMI GLOSS, FC (30)
3. SHIPPED IN SECURED POLY BAG

SUPERSEDES DRAWING 6704-SSP9 SHEET 1 OF 2 DATED 7/30/01.

CUSTOMER PRINT
SHEET 1 OF 2

<p>LINEAR MEASURE: INCH</p> <p>UNLESS OTHERWISE SPECIFIED TOLERANCES ARE AS FOLLOWS:</p> <p>ANGLES: IN MM</p> <p>2 PLACE DEC.: ±.03 ±.76</p> <p>3 PLACE DEC.: ±.015 ±.38</p> <p>ALL HOLES: ±.005 ±.13</p>				<p>DATE 12/7/2012</p> <p>DR. BY FLP</p> <p>SCALE FULL</p> <p>CHK. BY</p>		<p>EBERHARD MANUFACTURING CO.</p> <p>DIVISION OF THE EASTERN COMPANY</p> <p>CLEVELAND, OHIO 44149-9712</p>		<p>NAME HINGE, ASSEMBLY</p>	
<p>1 REDREW "EBERHARD CLEVELAND, OHIO" STENCIL ON BACK SURFACE PER ECR 131.</p>		<p>5910 7/5/2019</p>		<p>MATERIAL ~SEE NOTE~</p>		<p>PART NUMBER 6704-SSP9</p>			
<p>CONVERTED TO 3D</p>		<p>5582 12-7-12</p>		<p>THIS DOCUMENT IS IN ACCORDANCE WITH ASME Y14.5-2009</p>					
REV	DESCRIPTION	EN	DATE						