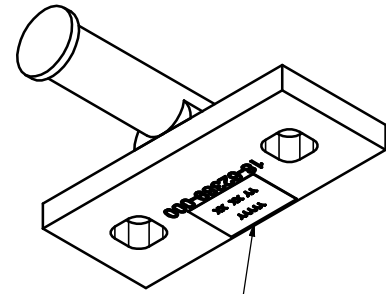
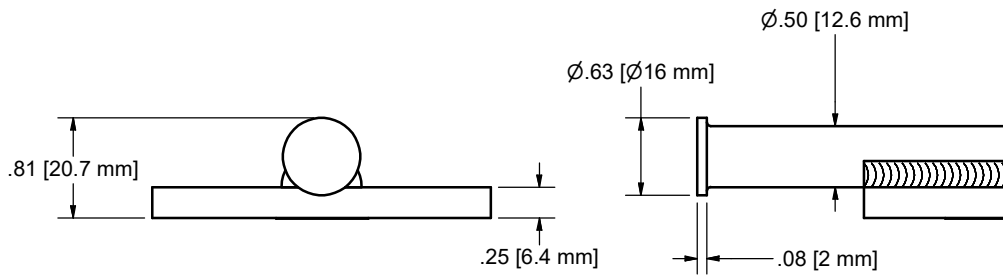
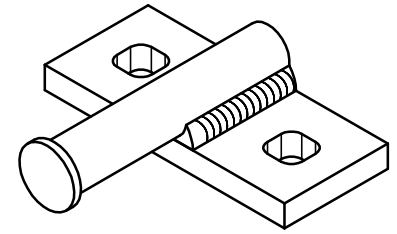
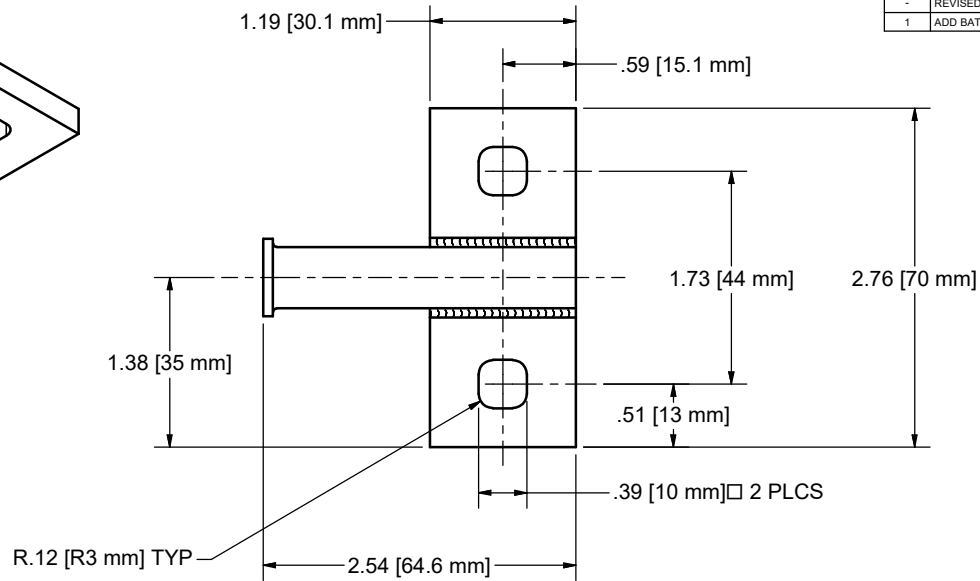


CONFIDENTIAL NOTICE: This drawing and the designs, specifications, and engineering information hereon are the property of Eberhard Manufacturing Company and are not to be disseminated or reproduced without express written consent. This drawing is loaned in confidence and then only for the consideration of the matter disclosed hereon. In accepting loan of this drawing, recipient agrees to keep it and the matter disclosed hereon in confidence and not to use or permit their use in any way detrimental to Eberhard Manufacturing Company, Division of The Eastern Company, 21944 Drake Road, Cleveland, Ohio, 44149-9712 © 2020 EBERHARD MFG. CO.

REVISION HISTORY					
REV	DESCRIPTION	EN	DATE	REV. BY	APVD BY
-	REVISED AND REDRAWN 3D	5964	8/21/2020	VRB	MR
1	ADD BATCH CODE LABEL	6026	10/29/2021	VRB	MR



② BATCH CODE LABEL



CUSTOMER PRINT
SHEET 1 OF 2

SUPERSEDES DRAWING 9-475-52 SH1 DATED 1/28/2008

- NOTES:
 1. EBERHARD FINISH: (64) ELECTROPLATED ZINC W/ YELLOW CHROMATE
 2. HEAT TREAT TO RC 25-32
 3. CUSTOMER PART NUMBER 18-62389-000
 4. COMPLIES WITH FMVSS 206 WHEN TESTED WITH P/N 8T-475-R/L (CUSTOMER P/N A22-61731) IN ACCORDANCE WITH SAE J839

THIS DOCUMENT IS IN ACCORDANCE WITH ASME Y14.5-2009		
LINEAR MEASUREMENT- INCH	DATE	
UNLESS OTHERWISE SPECIFIED	8/21/2020	
TOLERANCES ARE AS FOLLOWS:	DWN. BY	
ANGLES:	± 2°	± 2°
2 PLACE DEC.:	± .03	± .76
3 PLACE DEC.:	± .015	± .38
ALL HOLES:	± .005	± .13

EBERHARD MANUFACTURING CO. DIVISION OF THE EASTERN COMPANY CLEVELAND, OH 44149-9712	
NAME	
WELDED STRIKER ASSEMBLY	
MATERIAL	PART NUMBER
Steel	9-475-52