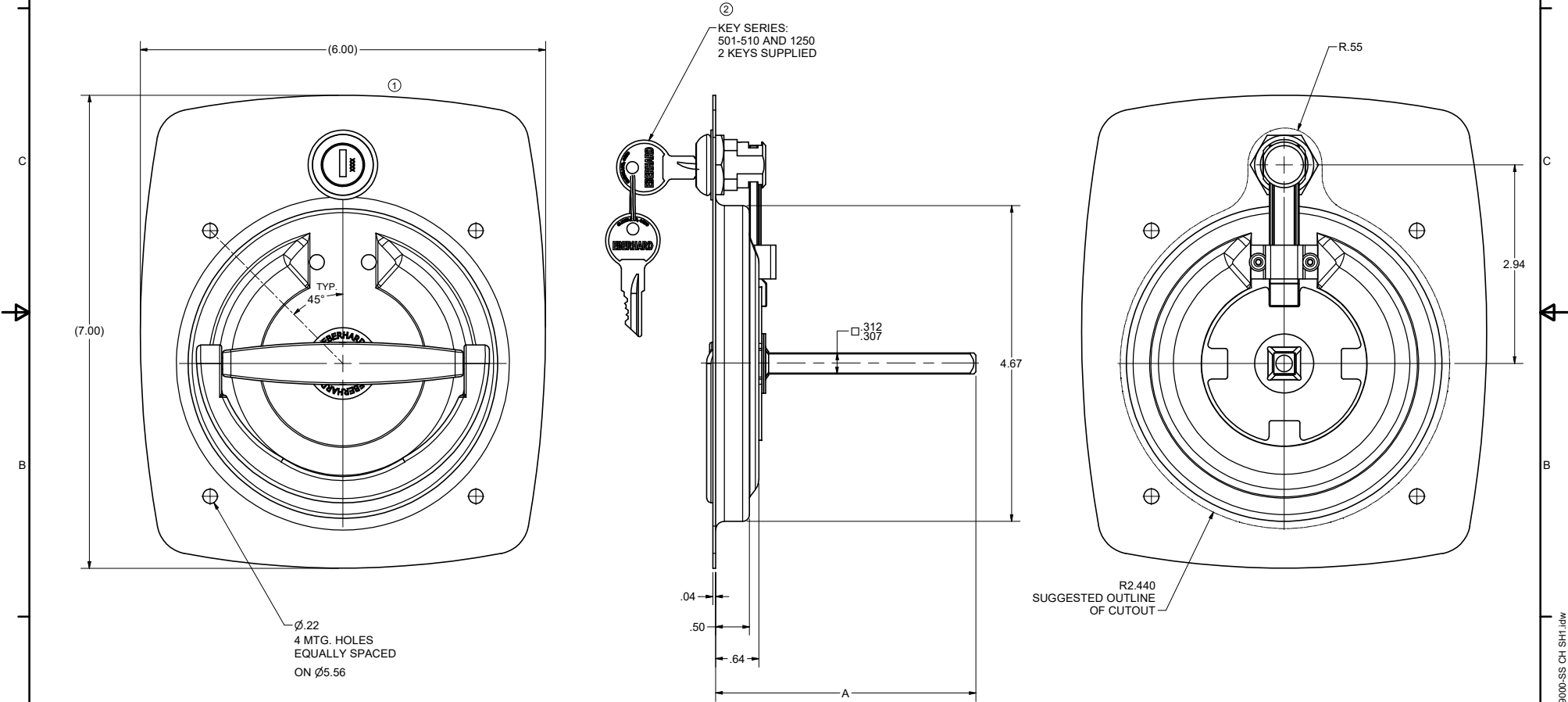


CONFIDENTIAL NOTICE: This drawing and the designs, specifications and engineering information disclosed hereon are the property of Eberhard Manufacturing Company and are not to be disseminated or reproduced without express written consent. The drawing is loaned in confidence and then only for consideration of the matter disclosed hereon. In accepting loan of this drawing, recipient agrees to keep it and the matter disclosed hereon in confidence and not to use nor permit their use in any way whatsoever by Eberhard Manufacturing Company, Division of The Eastern Company, 2184 Drake Road, Cleveland, Ohio 44149-0712. © 2014 EBERHARD MFG. CO.

REVISION HISTORY					
REV	DESCRIPTION	EN	DATE	REV BY	APVD BY
1	CONVERTED TO 3D	5614	7-26-13		
1	REVISED VIEW	5682	12-5-14	FLP	MR
2	KEY NUMBER 751 REMOVED AND ADDED 501-510	5869	9/7/2018	KAB	MR

PART NO.	FINISH	DESCRIPTION	"A" SHANK LENGTH
9000-SS	(32) STAINLESS RECEPT W/ BLACK HANDLE	KEY-LOCKING W/4 MTG. HOLES	3.81
1-9000-SS	(32) STAINLESS RECEPT W/ BLACK HANDLE	KEY-LOCKING W/4 MTG. HOLES	1.36



CUSTOMER PRINT
SHEET 1 OF 2

EBERHARD MANUFACTURING CO.
DIVISION OF
THE EASTERN COMPANY
CLEVELAND, OHIO 44149-0712

**RECESSED "D" HANDLE
ASSEMBLY - KEY LOCKING**

THIS DOCUMENT IS IN ACCORDANCE WITH ASME Y14.19-2009		DATE	7/26/2013
UNLESS OTHERWISE SPECIFIED TOLERANCES ARE AS FOLLOWS:		DR BY	FLP
LINEAR MEASURE: INCH	----	SCALE	FULL
ANGLES:	# 2 # 2	MATERIAL	----
2 PLACE DEC:	# .03 # .76	CHK BY	----
3 PLACE DEC:	# .015 # .38		
ALL HOLES:	# .005 # .13		

PART NUMBER	9000-SS	CHART	
-------------	---------	-------	--

SUPERSEDES DRAWING 9000-SS CHART SHEET 1 OF 2 DATED 9-16-04.

C:\Working_Folder\Archive\Proj\9000_1\9000-SS CH-SH1.dwg