

PROJ. NO: T1017

DESTROY ALL PRINTS PREVIOUS TO

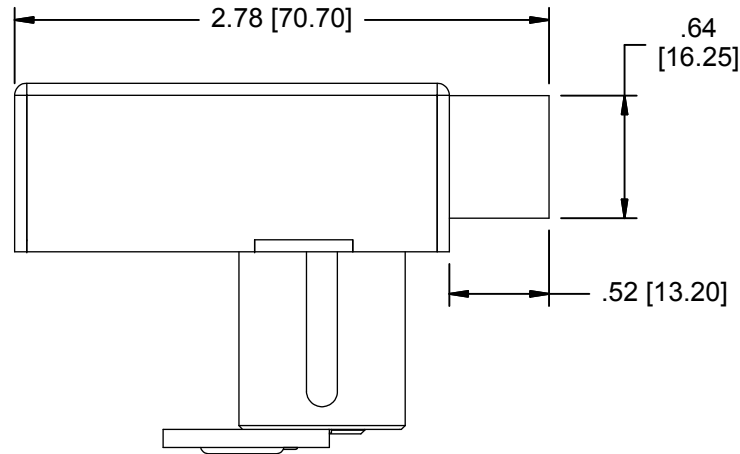
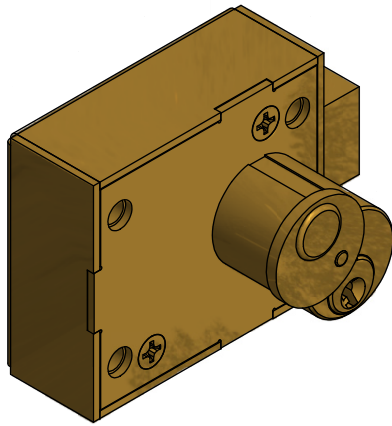
PART NO:

A15481LS5054

REV.
NO.

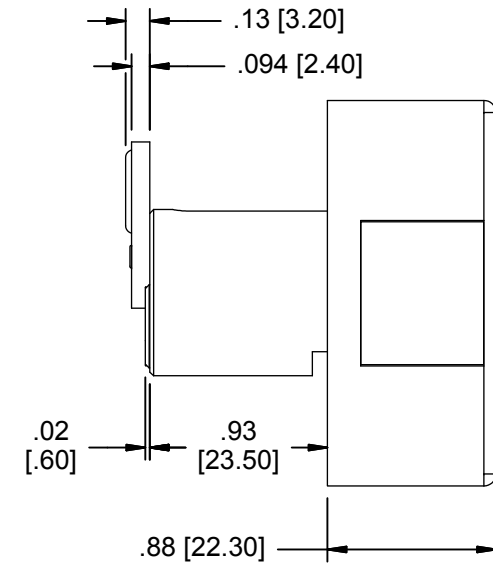
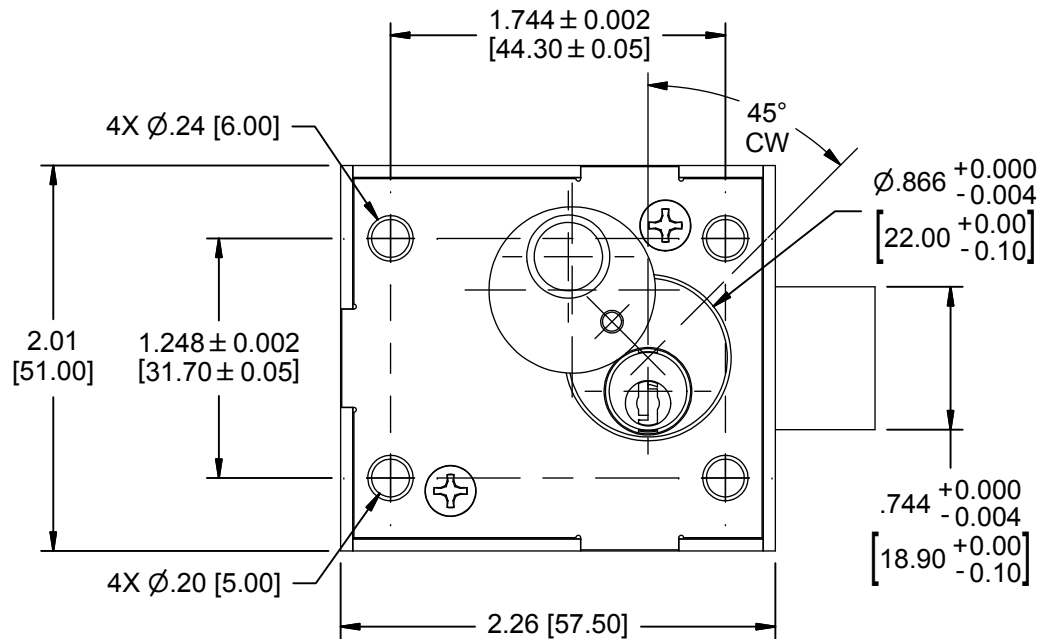
0

7/7/2017



NOTES:

1. LOCK SUPPLIED WITH 2-CCL KEYS PER LOCK (NOT SHOWN).
2. 45° CLOCKWISE ROTATION OF INSERTED KEY TO RETRACT THE BOLT.
3. CR KEYWAY; KEYED TO # 505.



THIS DRAWING IS THE EXCLUSIVE PROPERTY OF THE ILLINOIS LOCK COMPANY / CCL SECURITY PRODUCTS, AND IS SUBMITTED ONLY ON A CONFIDENTIAL BASIS. UNAUTHORIZED USE OR DISCLOSURE OF ITS CONTENTS AND REPRODUCTION IS PROHIBITED. THIS DRAWING, UNLESS OTHERWISE DIRECTED IS TO BE RETURNED TO THE ILLINOIS LOCK COMPANY / CCL SECURITY PRODUCTS.

Illinois Lock Company



SECURITY PRODUCTS

WHEELING, IL.

MATERIAL: BRASS

TOLERANCES, UNLESS OTHERWISE SPECIFIED

FINISH: US4: SATIN BRASS

VALUE	INCHES [mm]
X.	± .030 [.762]
X.X	± .015 [.381]
X.XX	± .010 [.254]
X.XXX	± .005 [.127]
FRACTIONS: ± 1/32	ANGLES: ± 2°

ENG: A.O.

SCALE: 1 : 1

CHECKED BY:

DATE: 7/7/2017

15481 ENCLOSURE LOCK (LEFT HANDED)

CUST. NAME:

CUST. PART NO:

SHEET: 1 OF 1