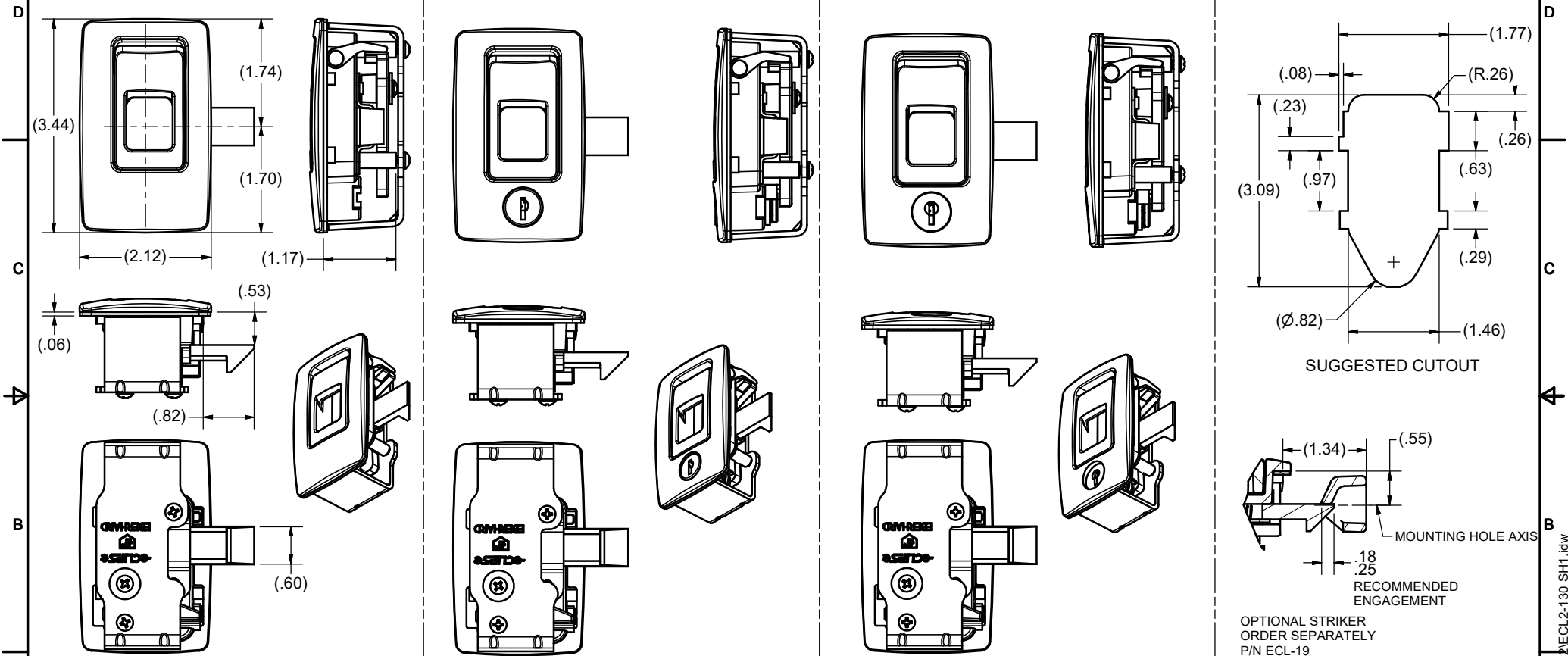


CONFIDENTIAL NOTICE: This drawing and the designs, specifications, and engineering information hereon are the property of Eberhard Manufacturing Company and are not to be disseminated or reproduced without express written consent. This drawing is loaned in confidence and then only for the consideration of the matter disclosed hereon. In accepting loan of this drawing, recipient agrees to keep it and the matter disclosed hereon in confidence and not to use or permit their use in any way detrimental to Eberhard Manufacturing Company, Division of The Eastern Company, 21944 Drake Road, Cleveland, Ohio, 44149-9712 © 2022 EBERHARD MFG. CO.

REVISION HISTORY					
REV	DESCRIPTION	EN	DATE	REV. BY	APVD BY
-	RELEASED WAS M13345	6075	10/28/2022	VRB	MR

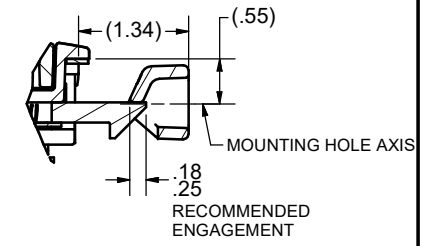
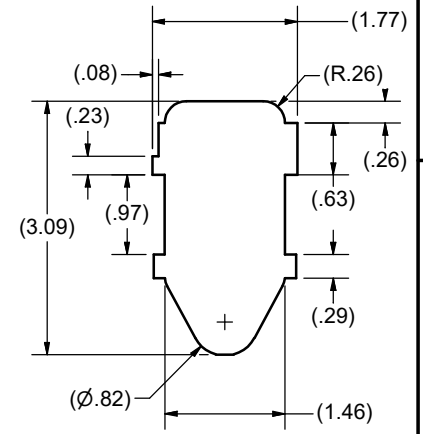
DIMENSIONS TYPICAL FOR ALL VERSIONS



ECL2-130
ECLIPSE 2 -- SLAM LATCH WITH PULL RING, NON-LOCKING

ECL2-130-K
ECLIPSE 2 -- SLAM LATCH WITH PULL RING, LOCKING
AVAILABLE WITH KEY NUMBERS 501-510, AND 751

ECL2-130-K2
ECLIPSE 2 -- SLAM LATCH WITH PULL RING, LOCKING
AVAILABLE WITH KEY NUMBER 7216 ONLY



NOTES:
FINISH: (MB) MATTE BLACK

THIS DOCUMENT IS IN ACCORDANCE WITH ASME Y14.5-2009	
LINEAR MEASUREMENT - INCH	DATE
UNLESS OTHERWISE SPECIFIED TOLERANCES ARE AS FOLLOWS:	10/28/2022
ANGLES: ± 2° ± 2°	DWN. BY
2 PLACE DEC.: ± .03 ± .76	RBernol
3 PLACE DEC.: ± .015 ± .38	SCALE
ALL HOLES: ± .005 ± .13	2/3
	CHK. BY

EBERHARD MANUFACTURING CO.	
DIVISION OF THE EASTERN COMPANY	
CLEVELAND, OHIO 44149-9712	
NAME	ECLIPSE 2 SLAM LATCH WITH PULL RING, NON-LOCKING AND LOCKING
MATERIAL	PART NUMBER ECL2-130 ECL2-130-K ECL2-130-K2

C:\Working_Folder\Archive\ProECL2\ECL2-130 SH11.idw