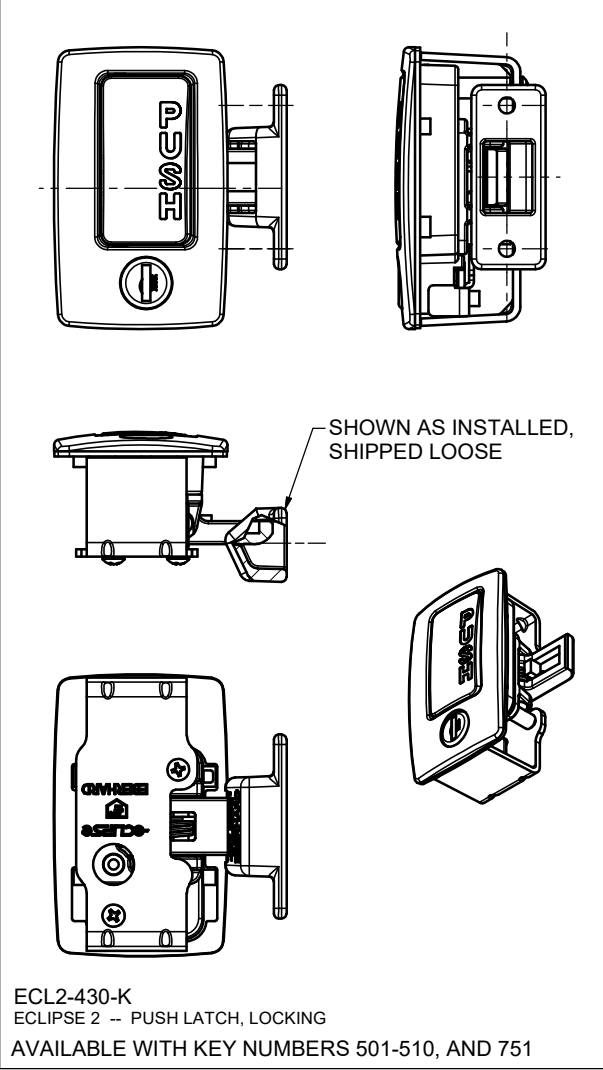
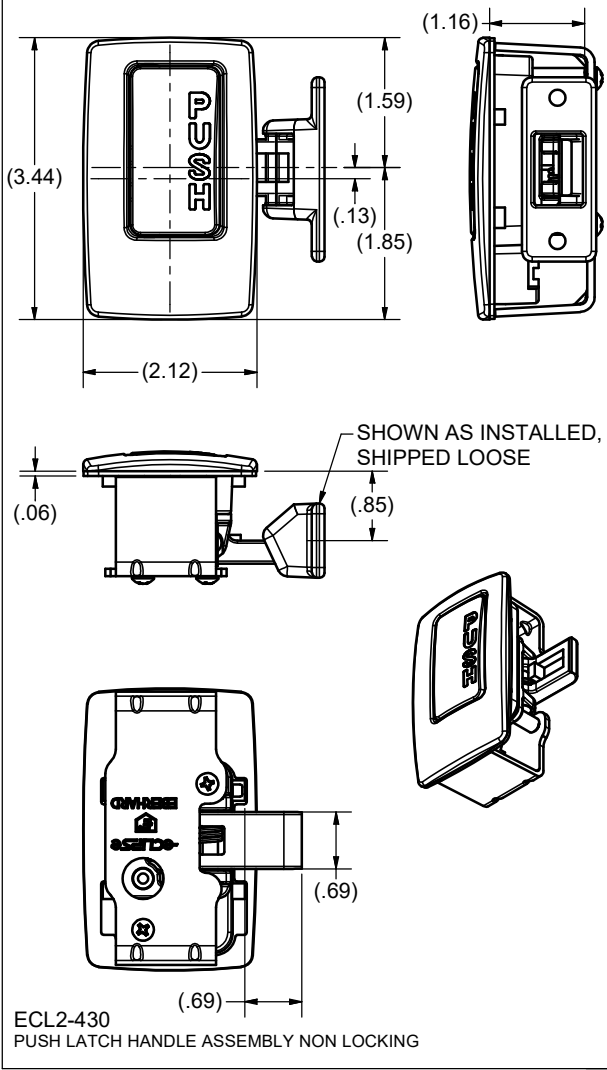
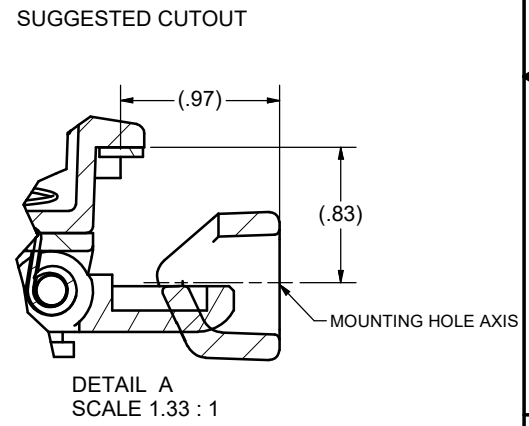
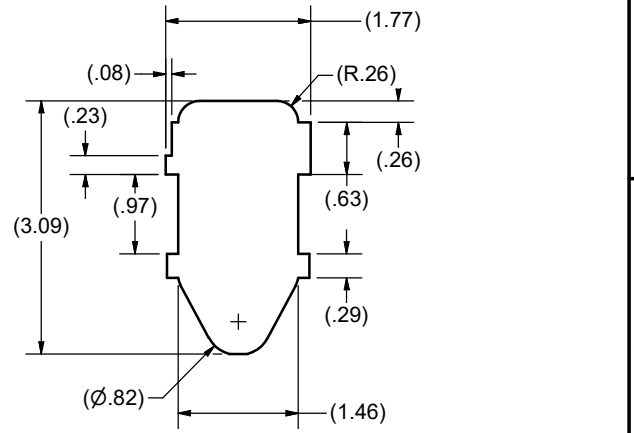


CONFIDENTIAL NOTICE: This drawing and the designs, specifications, and engineering information herein are the property of Eberhard Manufacturing Company and are not to be disseminated or reproduced without express written consent. This drawing is loaned in confidence and then only for the consideration of the matter disclosed herein. In accepting loan of this drawing, recipient agrees to keep it and the matter disclosed herein in confidence and not to use or permit their use in any way detrimental to Eberhard Manufacturing Company, Division of The Eastern Company, 21944 Drake Road, Cleveland, Ohio, 44149-9712 © 2022 EBERHARD MFG. CO.

DIMENSIONS TYPICAL FOR ALL VERSIONS



REVISION HISTORY					
REV	DESCRIPTION	EN	DATE	REV. BY	APVD. BY
-	RELEASED WAS M13345	6075	10/28/2022	VRB	MR



CUSTOMER PRINT

EBERHARD MANUFACTURING CO.	
DIVISION OF THE EASTERN COMPANY CLEVELAND, OHIO 44149-9712	
NAME ECLIPSE 2 SLAM LATCH WITH PUSH BUTTON, NON-LOCKING AND LOCKING	
MATERIAL	PART NUMBER ECL2-430 ECL2-430-K

THIS DOCUMENT IS IN ACCORDANCE WITH ASME Y14.5-2009			
LINEAR MEASUREMENT: INCH		DATE	
UNLESS OTHERWISE SPECIFIED		10/28/2022	
TOLERANCES ARE AS FOLLOWS:		DWN. BY	
ANGLES:	IN	MM	FLP
2 PLACE DEC.:	± .2°	± .76	SCALE
3 PLACE DEC.:	± .03	± .38	2:3
ALL HOLES:	± .005	± .13	CHK. BY

NOTES:
FINISH: (MB) MATTE BLACK

C:\Working_Folder\Archive\Pro\ECL2-430 SH11.idw