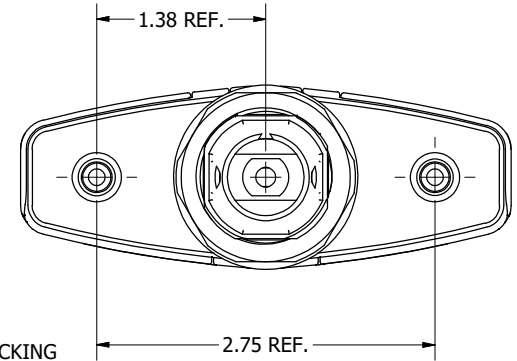
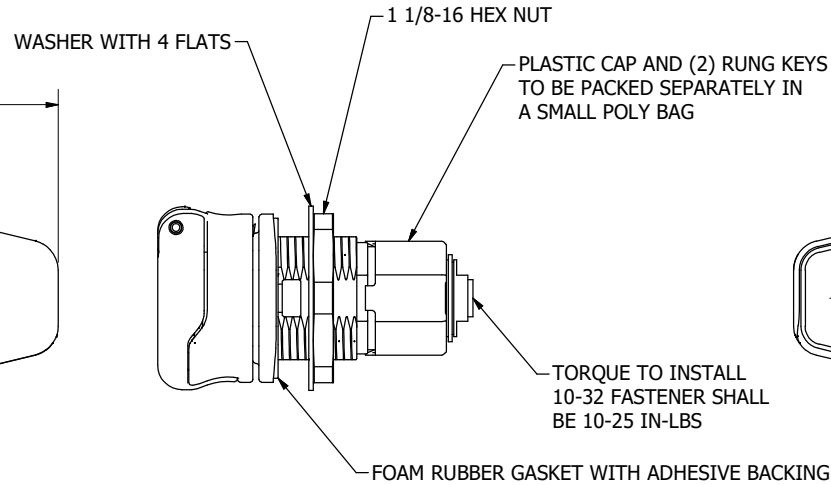
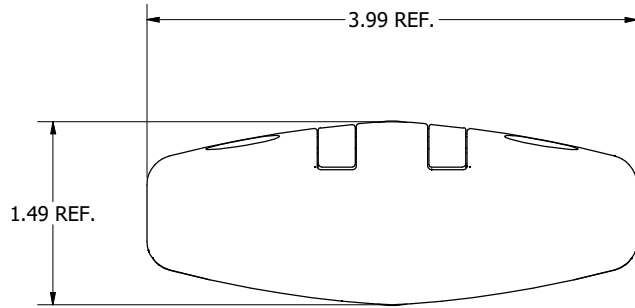
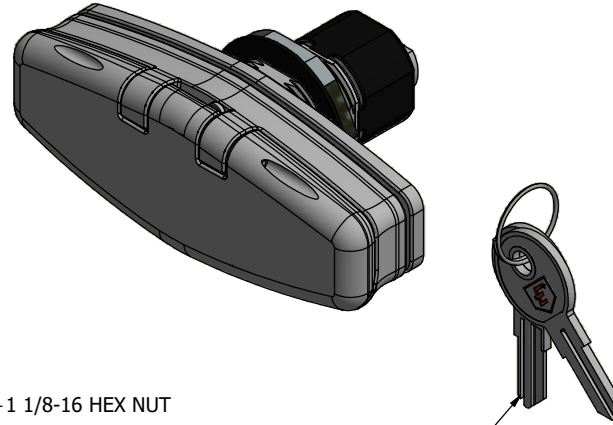
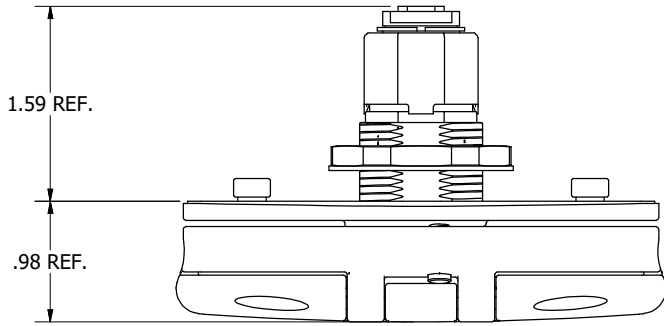


CONFIDENTIAL NOTICE: This drawing and the designs, specifications, and engineering information hereon are the property of Eberhard Manufacturing Company and are not to be disseminated or reproduced without express written consent. This drawing is loaned in confidence and then only for the consideration of the matter disclosed hereon. In accepting loan of this drawing, recipient agrees to keep it and the matter disclosed hereon in confidence and not to use or permit their use in any way detrimental to Eberhard Manufacturing Company, Division of The Eastern Company, 21944 Drake Road, Cleveland, Ohio, 44149-9712 © 2021 EBERHARD MFG. CO.



- NOTES:**
1. FINISH: BLACK POWDER(TEXTURED) OVER E-COAT:FC(53CT)
 2. PACK (2) RUNG KEYS AND PLASTIC CAP IN A SMALL POLY BAG AND PLACE THAT BAG WITH HANDLE ASSEMBLY INTO A BUBBLE WRAP BAG AND RUBBER BAND TOGETHER. PACK WITH DIVIDERS FOR A TOTAL OF 30 ASSEMBLIES PER BOX.
 3. EACH BOX TO CONTAIN ONE KEY NO. PRM01-PRM50.

CUSTOMER PRINT

EBERHARD MANUFACTURING CO.
DIVISION OF
THE EASTERN COMPANY
CLEVELAND, OHIO 44149-9712

THIS DOCUMENT IS IN ACCORDANCE WITH ASME Y14.5-2009	
LINEAR MEASUREMENT - INCH	DATE
UNLESS OTHERWISE SPECIFIED TOLERANCES ARE AS FOLLOWS:	10/14/2022
ANGLES:	IN MM
2 PLACE DEC.: ± .03	± .03 ± .03
3 PLACE DEC.: ± .015	± .015 ± .015
ALL HOLES:	± .005 ± .005

NAME	ET13 HANDLE ASSEMBLY
DWN. BY	MM
SCALE	1 : 1
CHK. BY	
MATERIAL	SEE INDIVIDUAL PART DRAWINGS
PART NUMBER	LNL-70-00775

REVISION HISTORY					
REV.	DESCRIPTION	EN	DATE	REV. BY	APVD. BY
1	INITIAL RELEASE - DRW MANUFACTURED ASSEMBLY	6073	10/14/2022	MM	MR

4

3

2

1