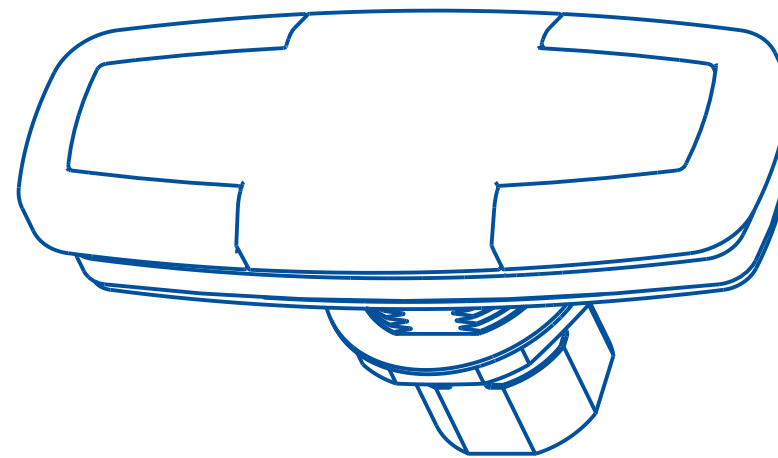
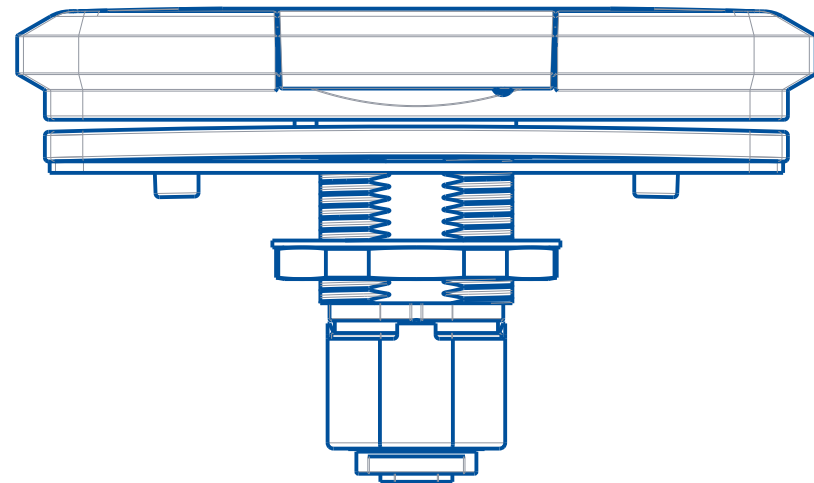


NOTES:

1. AFTER ASSEMBLING KEY CYLINDER, KEYS MUST INSERT SMOOTHLY IN EITHER DIRECTION AND MUST RETURN TO CENTER POSITION ($0^{\circ} \pm 2^{\circ}$) AFTER BEING LOCKED AND UNLOCKED.
2. LUBRICATE SPRINGS, O-RING AND DEAD BOLT MATING SURFACES ALL AROUND WITH MOBIL 1 SYNTHETIC RED GREASE.
3. LOCATING PIN TO BE REMOVED WHEN HANDLE IS BEING INSTALLED ON A CAP.
4. 1.0 ± 0.5 LB FORCE TO ACTIVATE SLIDE BOLT. DETENT MUST RETAIN BOLT AT TRAVEL STOPS WITH NO SLOP.
5. HANDLE TO RETURN TO CLOSED POSITION STOP WHEN RELEASED. WITH HANDLE AT STOP, OUTER PROFILE TO BE PARALLEL TO WITHIN $\pm 0.5^{\circ}$.
6. ROCK/SLOP: NO CONTACT ALLOWED BETWEEN HANDLE AND BUSHING WHEN ASS'Y IS COMPRESSED AT EITHER EDGE.
7. O-RINGS CRUSH 0.003" MIN.



(H)

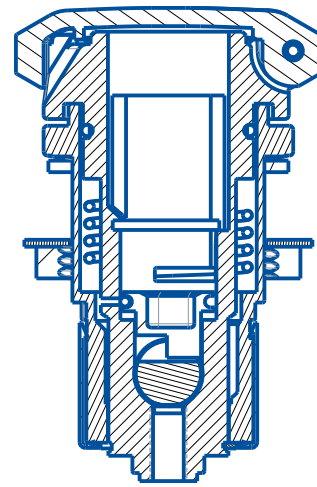
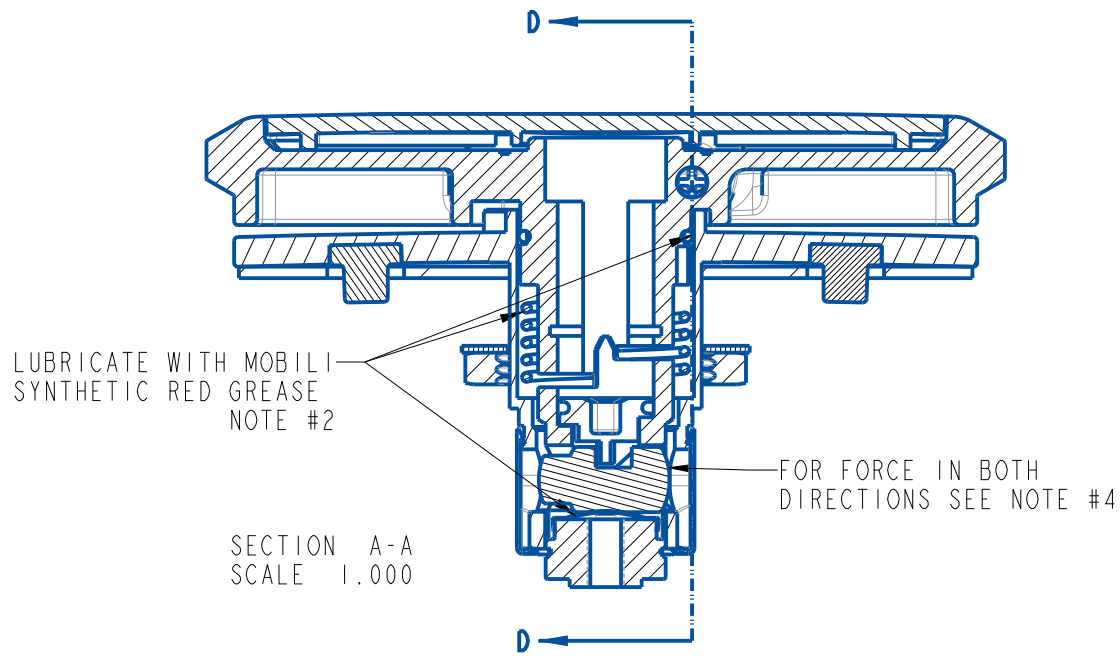
PART	REV	DESCRIPTION	QTY
02474	F	HANDLE, ET20	1
02473	D	BUSHING, HANDLE, ET20	1
02472	A	LID, HANDLE, ET20	1
02471	A	GASKET, HANDLE, ASSEMBLY, ET20	1
02470	A	SPRING, DETENT, SST, ET20	1
01855	A	SPRING, DETENT, LOCK BOLT, HALF MOON	1
01757	E	SLIDE BOLT, EGR	1
01579	A	KEY CYL, ADAPTOR, RETAINING, PIN	1
01464	C	KEY CYLINDER SPACER, EL5	1
00695	B	WASHER WITH 4 FLATS	1
00692	B	PIN, HINGE, ET10, ET12	2
00690	C	PIN, LID DETENT, ET10, ET12	1
00660	E	CAP, DUST COVER, PLASTIC, EL2, ET10, ET15	1
00636	C	O-RING, HANDLE,	1
00593	E	SNAP RING, HANDLE, 0.590" ID, 0.720" OD, EL2, ET10, ET12, ET15	1
00591	H	SPRING, TORSION, HANDLE, EL2, ET10, ET15	1
00216	F	PIN, ANTI-ROTATION, 00655, EL1, EL2, ET15	2
00025	D	SPRING, HINGE, SST, ET-5, ET10, ET12	1
00018	E	NUT, BUSHING, 1.125-16	1

BUILD TOLERANCES X.X ± 0.030 X.XX ± 0.015 X.XXX ± 0.005 X.XXXX ± 0.003 ANGLES $\pm 1^{\circ}$ INSP. PT.	FINISH:	ASSY	MAT'L:	ASSY	
	DESCRIPTION:	HANDLE, ASSEMBLY, ET20			
	REV. LEVEL:	H	REV. DATE:	08-12-20	
	ECN #:	429	SHEET 1 OF 2	UNITS:	INCH
		DETAILED BY:	REVISED BY:	CHECKED BY:	DWG SIZE
		LJH	LJH	-	B
		SCALE:	SEE NOTES	DATE:	01-28-20

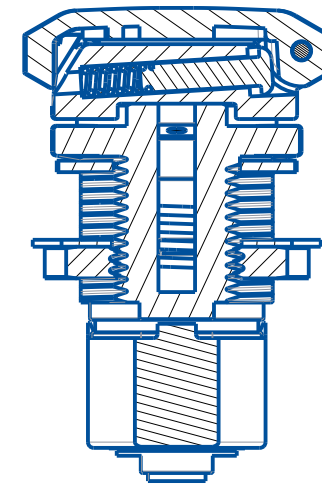
P/N: 02475



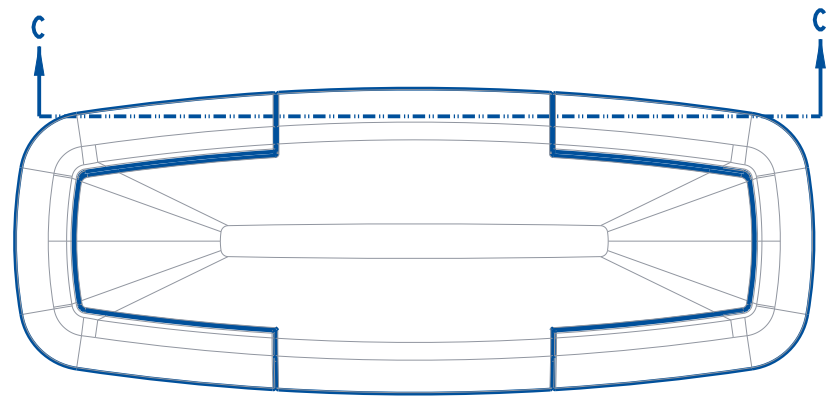
www.loadnlocksystems.com



SECTION B-B

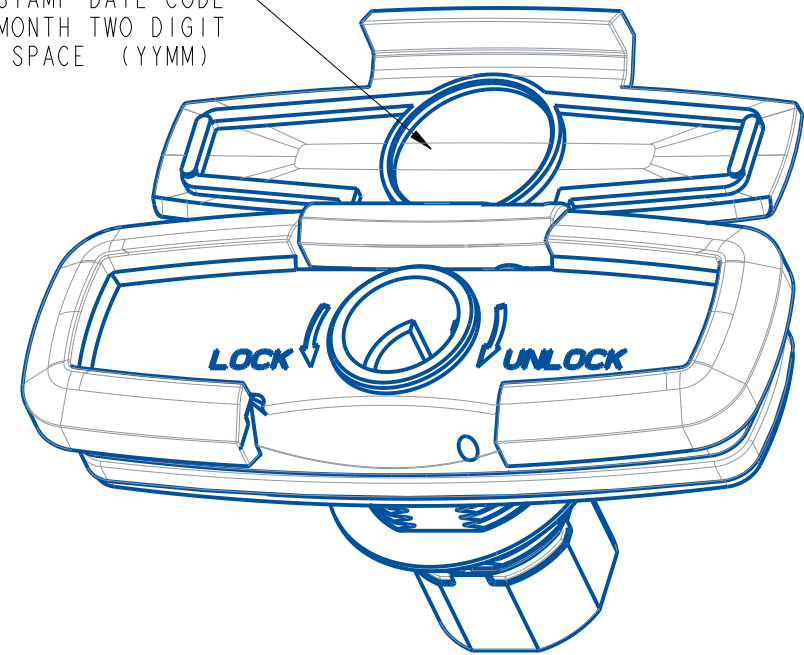


SECTION D-D



SECTION C-C

INK STAMP DATE CODE
YEAR TWO DIGIT MONTH TWO DIGIT
NO SPACE (YYMM)



BUILD TOLERANCES X.X ±0.030 X.XX ±0.015 X.XXX ±0.005 X.XXXX ±0.003 ANGLES ±1° INSP. PT.	FINISH:	ASSY	MAT'L:	ASSY						
	DESCRIPTION:	HANDLE, ASSEMBLY, ET20								DWG SIZE
	REV. LEVEL:	H	REV. DATE:	08-12-20	DETAILED BY:	LJH	REVISED BY:	LJH	CHECKED BY:	-
	ECN #:	429	SHEET 2 OF 2	UNITS:	INCH	SCALE:	SEE NOTES	DATE:	01-28-20	B

P/N: 02475



www.loadnlocksystems.com