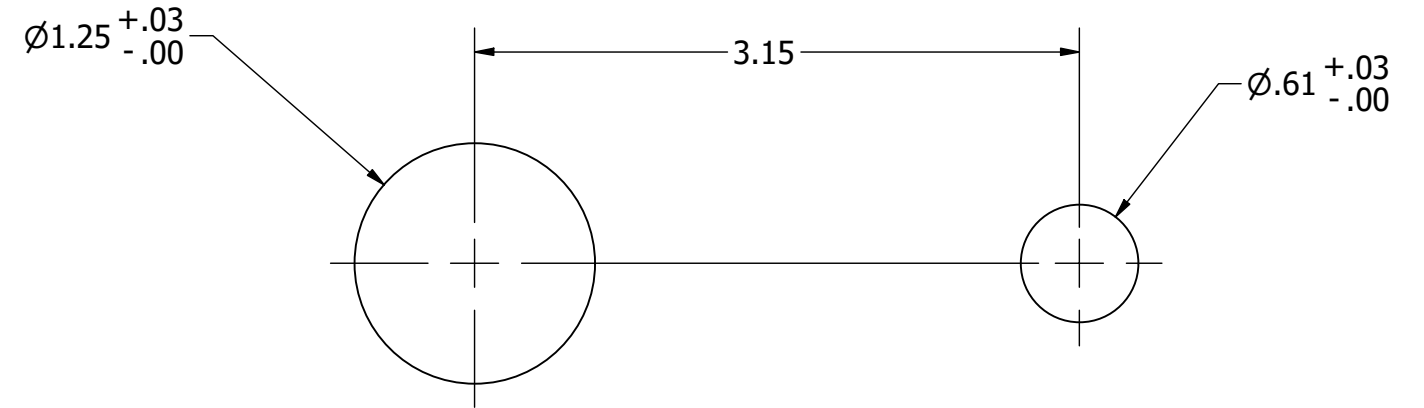
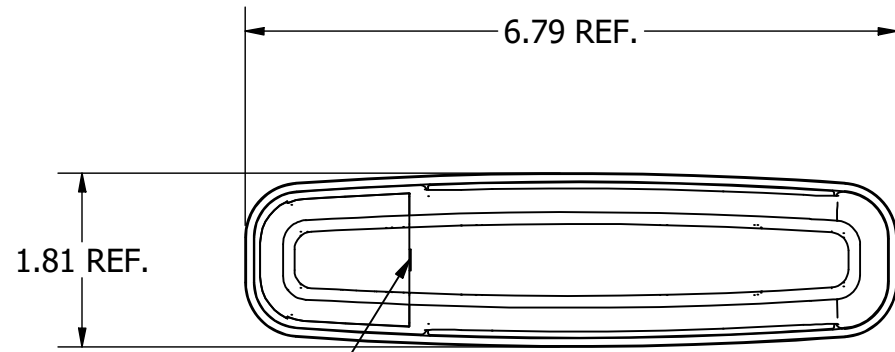


REVISION HISTORY					
REV	DESCRIPTION	EN	DATE	REV. BY	APVD. BY
	INITIAL RELEASE - DRW MANUFACTURED ASSEMBLY	6127	12/1/2023	M.M.	J.F.

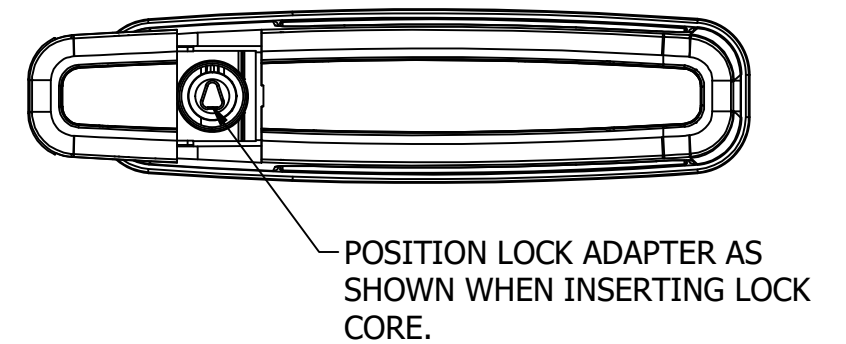
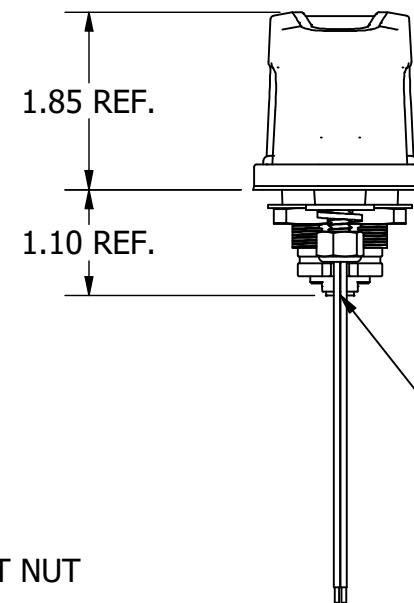
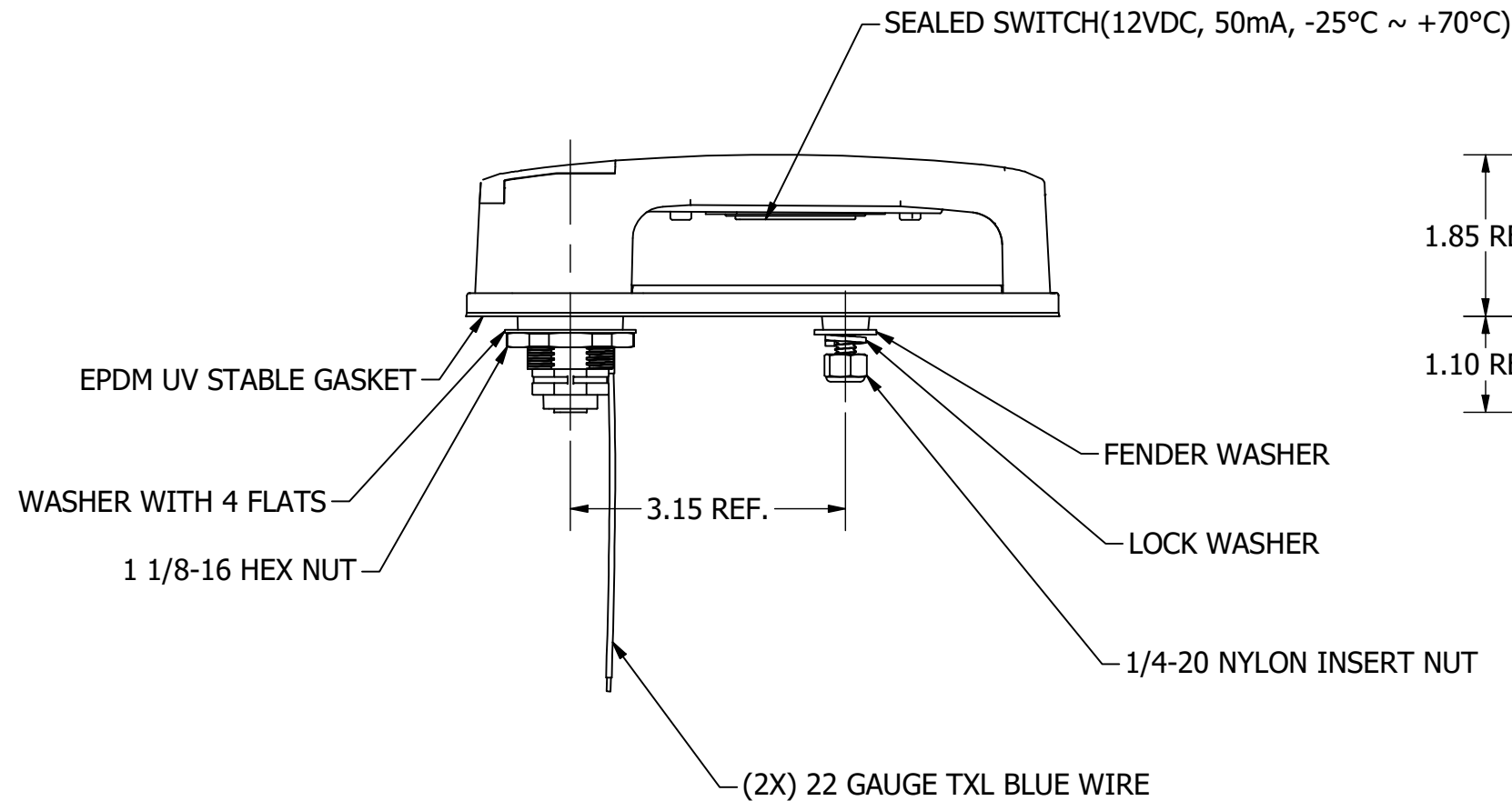
**NOTES:**

1. FINISH: MATTE BLACK PLASTIC AND BLACK POWER COAT: FC(MB/30)
2. KEYS AND LOCKS ARE NOT INCLUDED WITH HANDLE ASSEMBLY. HANDLE USES LOCKS: LNL-70-01701RW THRU LNL-70-1720RW AND KEYS: LNL-74-01801RW THRU LNL-74-01820RW, KEY NUMBERS 021L THRU 040L.



SLIDING LOCK COVER, INSERT TIP OF KEY IN SLOT AND TURN EITHER WAY TO RELEASE

**RECOMMENDED APPLICATION HOLE PATTERN**



TORQUE TO INSTALL 10-32 FASTENER SHALL BE #10-25 IN-LBS

**CUSTOMER PRINT**

THIS DOCUMENT IS IN ACCORDANCE WITH ASME Y14.5-2009			DATE
LINEAR MEASUREMENT: INCH			12/1/2023
UNLESS OTHERWISE SPECIFIED TOLERANCES ARE AS FOLLOWS:			DWN. BY
			M.M.
ANGLES:	IN	MM	SCALE
2 PLACE DEC.:	± .03	± .76	1 / 2
3 PLACE DEC.:	± .015	± .38	CHK. BY
ALL HOLES:	± .005	± .13	

<b>EBERHARD MANUFACTURING CO.</b> DIVISION OF THE EASTERN COMPANY CLEVELAND, OHIO 44149-9712	
NAME <b>TOUCH RELEASE HANDLE - ASSEMBLY</b>	
MATERIAL <b>SEE PART DRAWINGS</b>	PART NUMBER <b>LNL-70S-42180</b>